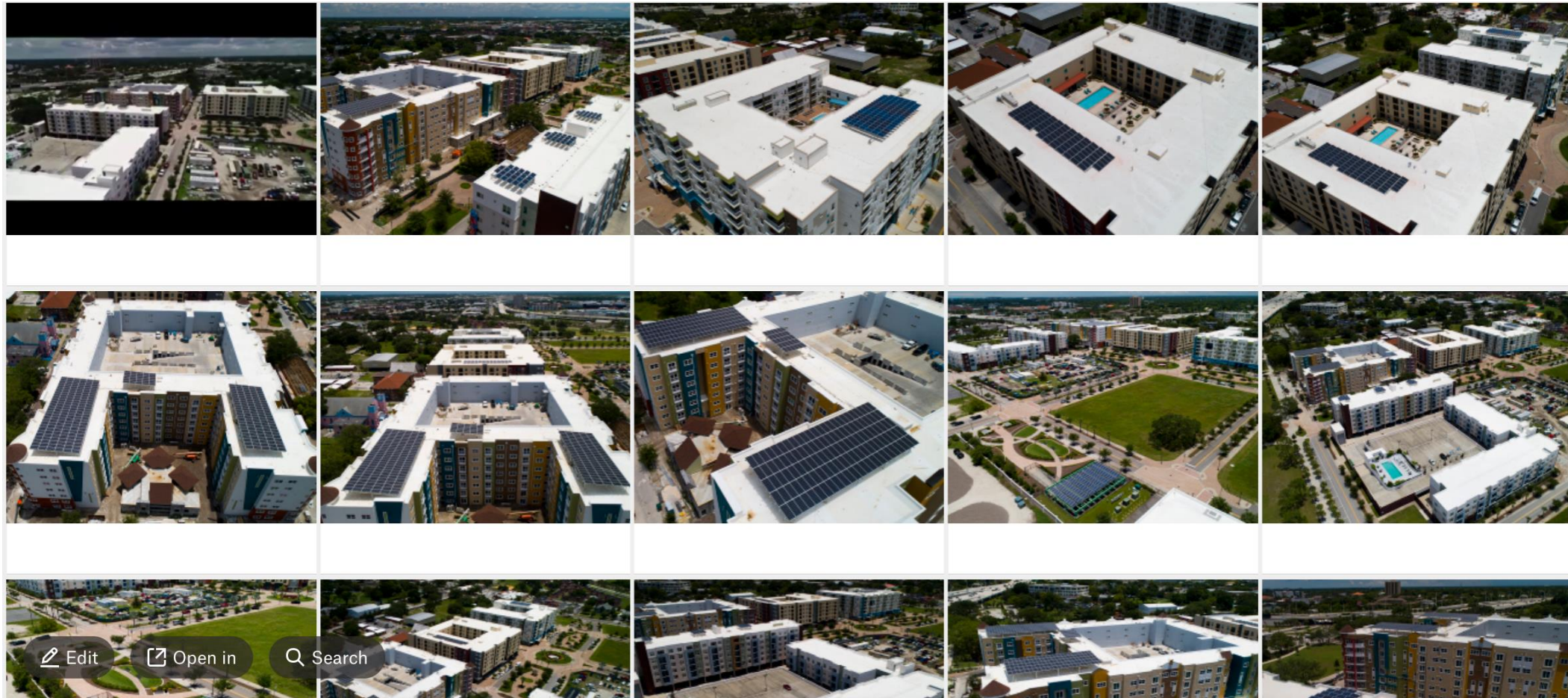




Renewable Energy Program



Leroy Moore, Senior Vice-President/COO

August 15, 2024





Solar over District Storm Water Vault – 22.77kW
ENCORE



Tempo at ENCORE

- **100.8 KW** Array
- Offset to common area electrical load



Ella at ENCORE- **31.68kW**
Trio at ENCORE- **16.83kW**
Reed at ENCORE- **28.56kW**

- Combined **77.07 kW** Solar Array
- Offset to common area electrical load



ENCORE Tampa – **200.64 total kW**
Potential for an additional **500+ kW**



JL Young Apartments & Annex

700 kW Solar Array

Offsetting common area electrical usage for 450-unit senior community. Maxed out.

- end