



**AIA**  
Florida



**NEWS RELEASE**

June 19, 2019

**MEDIA CONTACTS**

Laura Cassels, lcassels@aiafla.org  
(850) 830-9690

Vanessa Vidacs, vvidacs@aiafla.org  
(850) 222-7590, ext. 209

**Voting Opens in People’s Choice Architecture Competition**

*Contest spotlights best-loved buildings throughout Florida*

**TALLAHASSEE, Fla.** -- The transformative power of great architectural design is at the heart of a competition opening Friday to identify the best-loved buildings in Florida.

The fantastical creation that is The Wizarding World of Harry Potter™ – Diagon Alley™ at Universal Studios Florida™ is no doubt the best known work of architecture among the 2019 “People’s Choice” nominees.

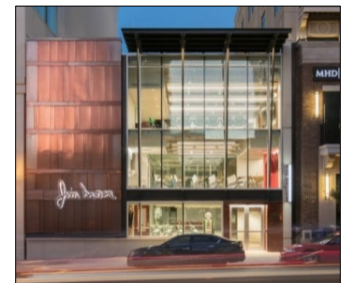


But also dazzling is the glass-within-glass masterpiece (at left) that is the Kotler-Coville Glass Pavilion at the John and Mable Ringling Museum of Art, in Sarasota. The pavilion exhibits an international collection of studio art glass through its transparent walls, and it filters light through vertical shade fins two stories tall that resemble ripples on water or sand.

The 2019 People’s Choice competition spotlights 41 architectural gems located throughout the Sunshine State and the architects who designed them. Photos and descriptions will be online at [www.FloridaPeoplesChoice.com](http://www.FloridaPeoplesChoice.com).

Hosted by the Florida Association of the American Institute of Architects, or AIA Florida, the competition has attracted more than 8 million votes from 150 different countries since it began six years ago. The 2018 People’s Choice winner was the Institute for Human & Machine Cognition, designed by Quina Grundhoefer Architects, housing headquarters and robotics labs in Pensacola’s historic Warehouse District.

The design team at Universal brought to life the The Wizarding World of Harry Potter™ – Diagon Alley™. Architects Lewis + Whitlock, based in the state capital, designed the Glass Pavilion and another People’s Choice nominee, the Jim Moran Building (at right) housing the School of Entrepreneurship in downtown Tallahassee.



Among the nominees cited for efficient use of energy is Kingsfield Elementary School, in Cantonment, near Pensacola, a 21<sup>st</sup> century learning environment with agile, technology-enabled classrooms and energizing spaces dedicated to innovation and wonder. It was designed by Bullock Tice Associates.

“Every year, the projects nominated for People’s Choice represent outstanding design that captures everyone’s imagination with their beauty, functionality, sensitivity to the environment, and innovativeness, as well as their power to create a sense of place,” said Nati Soto, FAIA, LEED AP, president of AIA Florida. “I’m delighted to open the 2019 competition and invite the public to learn about all of the 41 nominees.”

Other People’s Choice 2019 nominees include:

- Pompano Beach Library and Cultural Center, a state-of-the-art public library and cutting-edge cultural arts and media center, housed within a white, origami-like structure. Silva Architects with Monica Ponce de Leon Studio.
- Cade Museum, Gainesville, celebrating creativity and invention within a nautilus of a building designed as a metaphor for the human brain. GWWO Architects.
- Forte Dei Marmi in Miami, a 1938 hotel redesigned to reflect the Italian beach culture of the Tuscan coast and the modernist allure of South Beach. Oppenheim Architecture.
- Corsair Terminal at Fernandina Beach Municipal Airport, a hurricane-resistant structure that incorporates the iconic image of the Corsair, a WWII fighter plane in use in the 1940s when the airport first opened as a Navy pilot training facility. Passero Associates.
- The Bay Pines STEM Center of St. Petersburg College, housing sunlit, natural-science classrooms and labs that overlook wetlands and oak hammock, within a small construction footprint that minimally disturbed the site. Rowe Architects.
- Delray Beach Arts Warehouse, an art incubation space designed on a cube theme that brought creative energy to a blighted neighborhood. Currie Sowards Aguila Architects.
- Manatee Lagoon Eco Discovery Center, West Palm Beach, an education center reflecting Florida’s coastal vernacular, including a breezy, wrapping veranda and a cupola. Song + Associates, Inc.
- University of Florida Health North, Patient Pavilion, Jacksonville, built to provide state-of-the-art healthcare and hospitality-inspired experiences for patients and staff, with keen sensitivity to the area’s waterways and local aesthetics. Gresham Smith.

Voting begins June 21 and ends July 26. The winner will be announced July 27 at the AIA Florida/Caribbean Design and Honor Awards presentation at The Ritz-Carlton Orlando, Grande Lakes.

**MEDIA: Additional details and photos are available.**

# # #

*The Florida Association of the American Institute of Architects, headquartered in Tallahassee, represents the interests of more than 3,600 members in Florida and the Caribbean. Members adhere to a code of ethics and professional conduct that assures the client, the public and colleagues of an AIA-member architect’s dedication to the highest standards in professional practice.*

*The Florida Foundation for Architecture is a non-profit organization that exists to advocate the value of architecture to audiences beyond the profession. This is accomplished through Foundation events, publications and grants for programs that feature architecture and are open and available to the general public and related professions, as well as architects. The Florida Foundation for Architecture sponsors the People’s Choice Awards.*