

PETER E GRAY

Registrations

Registered Architect
State of Florida #AR0093290
State of South Carolina #4281
NCARB Certificate Holder #55113

Professional Affiliations

Member, American Institute of Architects

Education

Master of Architecture
Clemson University

Bachelor of Science, cum laude
Clemson University

Awards and Recognition

Finalist, 2009 Florida Sustainable Classroom Design Competition, AIA Florida/Florida Foundation for Architecture

Finalist, 2008 Florida Cottage Design Competition, AIA Florida/Florida Foundation for Architecture

Tau Sigma Delta medal for design excellence, Clemson University

Offering experience in architecture on a wide variety of commercial, residential & institutional projects, with a penchant for taking floundering projects through to completion. Project involvement includes project management, master planning, conceptual design, schematic design, design development, construction documents and construction administration.

Project Experience

2010-2011 Senior Project Architect | ROWE ARCHITECTS INC, Tampa, FL

Weimer Hall Expansion University of Florida, Gainesville

Project Architect for a 14,000 sq. ft. addition to the College of Journalism & Communications including a two-story "Convergence Newsroom" adjacent to existing radio & TV studios which will organize disparate programmatic functions and make the day-to-day operations of the college more accessible to the UF population. This space will also be the location for live newsroom "action shots" for WUFT-TV.

Multi-Purpose Student Center University of South Florida St. Petersburg

Project Architect for a new Multi-Purpose Student Center, including ballrooms, meeting rooms, and dormitories for University of South Florida's St. Petersburg campus, to be a minimum Silver LEED facility. The program includes a 7000 sq. ft ballroom, two meeting rooms, a private dining room, a 3000 sq. ft. food court, lobby, game room and lounge spaces, and 98 double-occupancy dormitory rooms. The Multi-Purpose student center will be a hub for campus life.

2008-2010 Senior Project Architect | DAVID WALLACE & ASSOCIATES, Dunedin, FL

Mt. Washington Mixed-Use, Pittsburgh, Pennsylvania

Site feasibility & schematic design for 500,000 sq. ft. high-rise urban infill development, consisting of hotel, apartments, retail, and medical offices.

Edgewater Commons, Edgewater, New Jersey

Site feasibility & schematic design for Hudson River Brownfield site mixed-use redevelopment featuring views of the New York skyline, consisting of mid-rise hotel, apartments, parking & retail.

Castaway Cay, Abaco, Bahamas

Construction Documents and Construction Administration Phases Project Manager for expansion to Disney-owned resort island, consisting of kitchen and food service, restrooms, cabanas, coordination with multiple engineering and food service consultants.

2005-2008 Professional of Record | BSW INTERNATIONAL, Tampa, FL

Pointe Plaza, Orlando, Florida

Project Manager, Architect of Record, Design and Construction Documents for 500-room multi-hotel and conference center, near the Orange County Convention Center; main client contact and project management of multi-discipline team.

Meres Town Center, Tarpon Springs, Florida

Project Manager, Design and Construction Documents for 150,000 sf mixed-use retail, residential, office, anchored by 40,000 sf grocery store.

Center Pointe Commons, Bradenton, Florida

Design, Construction Documents and Construction Administration for 100,000 sq. ft. redevelopment of existing retail corner of Tamiami Trail & Cortez Blvd, consisting of big-box and smaller retail & restaurants, featuring tilt-wall construction to meet construction costs and schedule.

Independence Square, Virginia Beach, Virginia

Project Manager, Design, Construction Documents and Construction Administration for façade upgrade to existing shopping center, using local contextual clues (red brick, precast stone, white trim) to invigorate a hodge-podge of disjointed ad-hoc strip center components.



PETER E GRAY

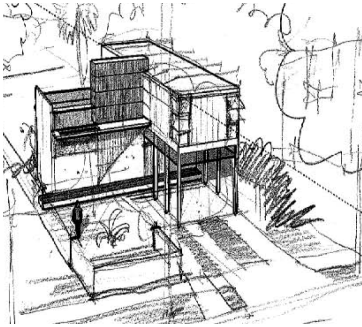


2003-2005 Project Manager | HALL ARCHITECTURAL ASSOCIATES, Port Orange, FL
Destination Daytona, Ormond Beach, Florida

Project Manager, Design, Construction Documents and Construction Administration for mixed-use entertainment center, consisting of condominium hotel, restaurants, retail, outdoor stage; new construction and remodeling of existing motel.

Lakeside Community Center, Port Orange, Florida

Project Manager, *Pro bono* design work and construction documents for 9000 sf facility with meeting spaces, kitchen, restrooms and locker rooms.



J&P Cycles, Ormond Beach, Florida

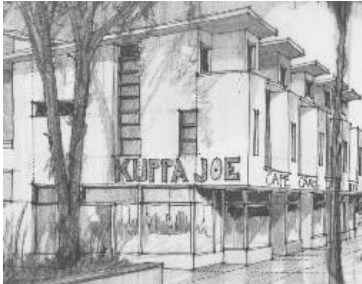
Project Manager, Schematic Design and Construction Documents for 40,000 sf retail, call center and regional distribution facility for motorcycle accessory supplier, using tilt-wall construction.

Sunshine Gardens, Port Orange, Florida

Project Manager, Schematic Design for 35-bed assisted living facility.

Town West Plaza, Port Orange, Florida

Project Manager, Schematic Design for two-story mixed use office/retail.



1993-1996 | 2000-2003 Partner | THE STUDIO ARCHITECTS, Charleston, SC

Kay Residence, Isle-of-Palms, South Carolina

Architect of Record for 9000 sq. ft. bed & breakfast overlooking Atlantic Ocean, located in coastal V-zone; pile construction with breakaway ground floor.

Reyes Residential Care, Hanahan, South Carolina

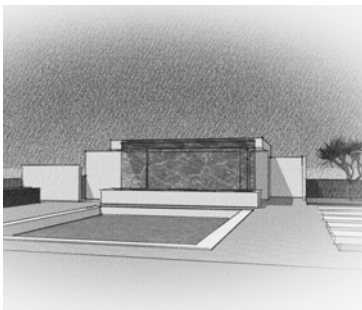
Architect of Record for 40-bed assisted-living facility.

Suncom, Charleston, South Carolina

Architect of Record, Tenant Improvement Proposal for Suncom regional offices.

Daniel Island, Charleston, South Carolina

Architect of Record, Design and Construction of high-end speculative residences.



1999-2000 Project Manager | GRITTON ARCHITECTURAL ASSOCIATES, Tampa, FL

3000 Bayshore, Tampa, Florida

Design Architect for award-winning class A office building.

1990-1993 Intern Architect | THOMAS & DENZINGER ARCHITECTS, Charleston, SC

Hilton Head Primary School Hilton Head Island, South Carolina

Construction Documents for additions and renovations to existing facility to convert former "open school" layout to traditional classroom layout.

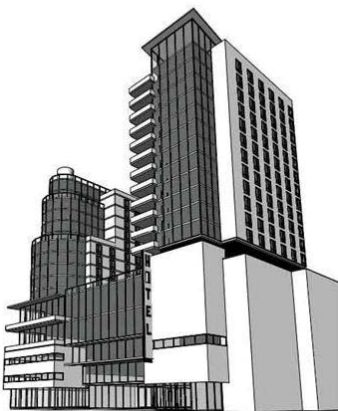
1990 Intern Architect | DAVID ALLISON ARCHITECT, Charleston, SC

Hermine Traeye Nursing Home, James Island, South Carolina (IE)

Construction Documents for 30 bed addition to existing one-story facility. The design solution utilized an "upside-down truss" configuration to allow for more expansive patient room volume and views of the surrounding "Lowcountry" environment

Naval Hospital, North Charleston, South Carolina (IE)

Construction Documents (NAVFACENCOM Standards) for expansion and relocation of Emergency Room & Triage.



Education

Master of Architecture, Clemson University 1988

Bachelor of Science in Design Clemson University 1984