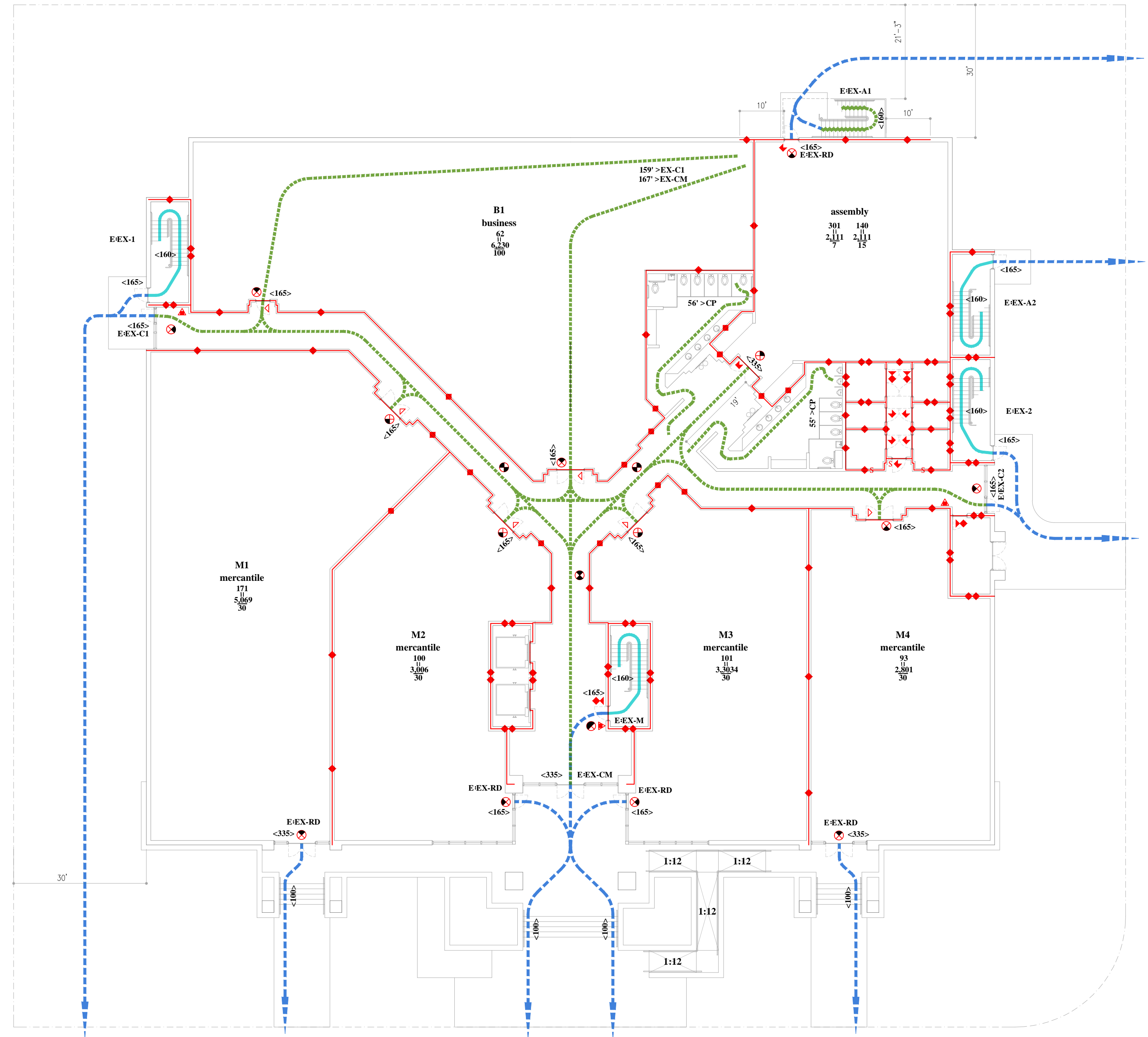


Second Story  
1/16"=1'

Mixed Occupancy Building  
TYPE ?  
Automatic Sprinkler System  
? STORIES  
?' HIGH



First Story above Grade  
1/16"=1'

LIFE SAFETY SYMBOLS

- EGRESS COMPONENT IDENTIFIER**  
 E# = EXIT NUMBER  
 HE = HORIZONTAL EXIT  
 CP = COMMON PATH OF TRAVEL  
 PD = PUBLIC DISCHARGE  
 RD = ROOM DOOR  
 ES = ESCAPE
- TRAVEL DISTANCE SYMBOL**  
 00 > SS = EGRESS COMPONENT DISTANCE TO
- EGRESS COMPONENT CAPACITY**  
 <00> = EGRESS COMPONENT CAPACITY  
 <<00> = GOVERNING COMPONENT CAPACITY
- OCUPANCY CAPACITY SYMBOL**  
 CAPACITY  
 SQUARE FEET PER PERSON  
 NET AREA (SQUARE FEET)
- GOVERNING CODE REFERENCE**  
 FFPC = FLORIDA FIRE PREVENTION CODE  
 FBC = FLORIDA BUILDING CODE  
 CODE SECTION
- EXIT ACCESS**  
 EXIT  
 EXIT DISCHARGE
- WALL RATINGS**  
 1 HOUR RATED WALL  
 2 HOUR RATED WALL  
 SMOKE BARRIER
- 34 HOUR RATED**
- 1 1/2 HOUR RATED**
- FIRE EXTINGUISHER**  
 3-A-80-B-C
- MANUAL PULL STATION**
- PRESSURIZED**
- FIRE TEST ID**

FLORIDA FIRE PREVENTION CODE 2007

1/19  
 N.F.P.A. 101 2006  
 Florida Administrative Code Chapter 69A-60  
 EGRESS WIDTH PER PERSON: LEVEL 0.2; STAIR 0.3  
 MINIMUM STAIR WIDTH 44" if occupancy < 50 then 36"

**ASSEMBLY**  
 Chapter 12  
 OCCUPANT LOAD = 1/15 NET  
 Concentrated = 17  
 Kitchen = 150  
 Pool area = 150  
 Pool Deck = 150  
 Fitness w/obj = 150  
 Fitness w/out = 150  
 MINIMUM CORRIDOR WIDTH 44", if occupancy < 50 then 36"  
 NO COMMON PATH OF TRAVEL OVER 20'; 75' if OCCUPANCY < 50  
 NO DEAD END CORRIDORS EXCEED 20'  
 MAXIMUM TRAVEL DISTANCE 250'

**RESIDENTIAL APARTMENT**  
 Chapter 30  
 OCCUPANT LOAD 1/200 GROSS  
 MINIMUM CORRIDOR WIDTH 44", if occupancy < 50 then 36"  
 COMMON PATH OF TRAVEL within UNIT 75'  
 COMMON PATH OF TRAVEL 50'  
 NO DEAD END CORRIDORS EXCEED 20'  
 MAXIMUM TRAVEL DISTANCE WITHIN UNIT 125'  
 MAXIMUM TRAVEL DISTANCE FROM DWELLING DOOR 200'  
 MAXIMUM TRAVEL DISTANCE FROM NON-DWELLING 250'

**MERCANTILE**  
 Chapter 36  
 Class A: > 30,000sf or > 3 stories  
 Class B: > 3,000sf < 30,000sf < 4 stories  
 Class C: < 3,000sf, 1 story  
 OCCUPANT LOAD STREET 1/50 GROSS  
 OCCUPANT LOAD 1/60 GROSS  
 MINIMUM CORRIDOR WIDTH 44", if occupancy < 50 then 36"  
 NO COMMON PATH OF TRAVEL OVER 100'  
 NO DEAD END CORRIDORS EXCEED 20'  
 MAXIMUM TRAVEL DISTANCE 250'

**BUSINESS**  
 Chapter 38  
 OCCUPANT LOAD 1/100 GROSS  
 MINIMUM CORRIDOR WIDTH 44", 36" if occupancy < 50  
 NO COMMON PATH OF TRAVEL OVER 100'  
 NO DEAD END CORRIDORS EXCEED 50'  
 MAXIMUM TRAVEL DISTANCE 300'

FLORIDA BUILDING CODE 2007

3/19  
 10/19

EGRESS WIDTH PER PERSON: LEVEL 0.2; STAIR 0.3  
 MINIMUM STAIR WIDTH 44" if occupancy < 50 then 36"

**ASSEMBLY**  
 GROUP A  
 OCCUPANT LOAD = 1/15 NET  
 Concentrated = 17  
 Kitchen = 150  
 Pool area = 150  
 Pool Deck = 150  
 Fitness w/obj = 150  
 Fitness w/out = 150  
 MINIMUM CORRIDOR WIDTH 44", if occupancy < 50 then 36"  
 NO COMMON PATH OF TRAVEL OVER 20'; 75' if OCCUPANCY < 50  
 NO DEAD END CORRIDORS EXCEED 20'  
 MAXIMUM TRAVEL DISTANCE 250'

**RESIDENTIAL**  
 GROUP R2  
 OCCUPANT LOAD 1/200 GROSS  
 MINIMUM CORRIDOR WIDTH 44", if occupancy < 50 then 36"  
 COMMON PATH OF TRAVEL 50'  
 NO DEAD END CORRIDORS EXCEED 20'  
 MAXIMUM TRAVEL DISTANCE WITHIN UNIT 125'; 75'; 138'

**MERCANTILE**  
 GROUP M  
 OCCUPANT LOAD STREET 1/30 GROSS  
 OCCUPANT LOAD 1/60 GROSS  
 MINIMUM CORRIDOR WIDTH 44", 36" if occupancy < 50  
 NO COMMON PATH OF TRAVEL OVER 100'  
 NO DEAD END CORRIDORS EXCEED 20'  
 MAXIMUM TRAVEL DISTANCE 250'

**BUSINESS**  
 GROUP B  
 OCCUPANT LOAD 1/100 GROSS  
 MINIMUM CORRIDOR WIDTH 44", 36" if occupancy < 50  
 NO COMMON PATH OF TRAVEL OVER 100'  
 NO DEAD END CORRIDORS EXCEED 50'  
 MAXIMUM TRAVEL DISTANCE 300'

Portable Fire Extinguishers

First Story  
 protected area  
 29,194  
 4-A-80-B-C ▲ 11,250 light  
 4-A-80-B-C ▲ 11,250 light  
 4-A-80-B-C ▲ 11,250 light  
 33,750

Second Story  
 protected area  
 29,194  
 4-A-80-B-C ▲ 11,250 light  
 4-A-80-B-C ▲ 11,250 light  
 4-A-80-B-C ▲ 11,250 light  
 33,750

First Story Mixed Occupant Load

85	50	50	46	150	147	147	147	441
335	165	165	335	165	165	165	335	665
E-EX-M1 RD	E-EX-M2 RD	E-EX-M2 RD	E-EX-M1 RD	E-EX-A RD	E-EX-C1	E-EX-C2	E-EX-CM	Egress Capacity

Second Story Mixed Occupant Load

21	21	21	62	B1
16	16	16	50	B2
16	16	16	23	B3
15	15	15	16	R1
21	21	21	16	R2
97	97	97	291	Egress Capacity
160	160	160	480	
E-EX-1	E-EX-2	E-EX-M		

Second Story Separated Assembly

151	151	301	Assembly
151	151	302	
160	160	320	Egress Capacity
E-EX-A1	E-EX-A2		

BOAF-AIA-FES Joint Task Force

Life Safety Plan Demo

If this sheet is not 24x36 inches then scale is not as noted.

The work shown, to the best of my knowledge and ability, complies with the FLORIDA BUILDING CODE 2019 and the FLORIDA FIRE PREVENTION CODE 2019.