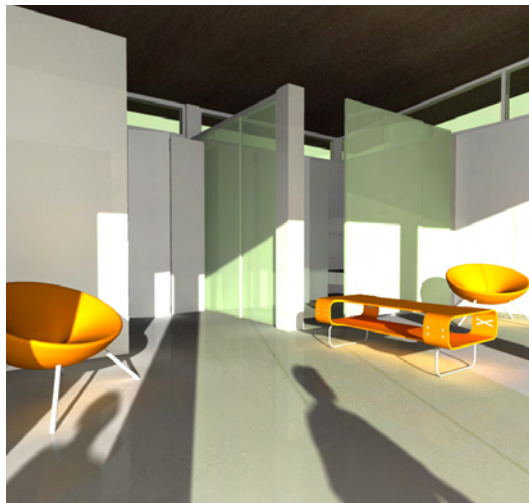
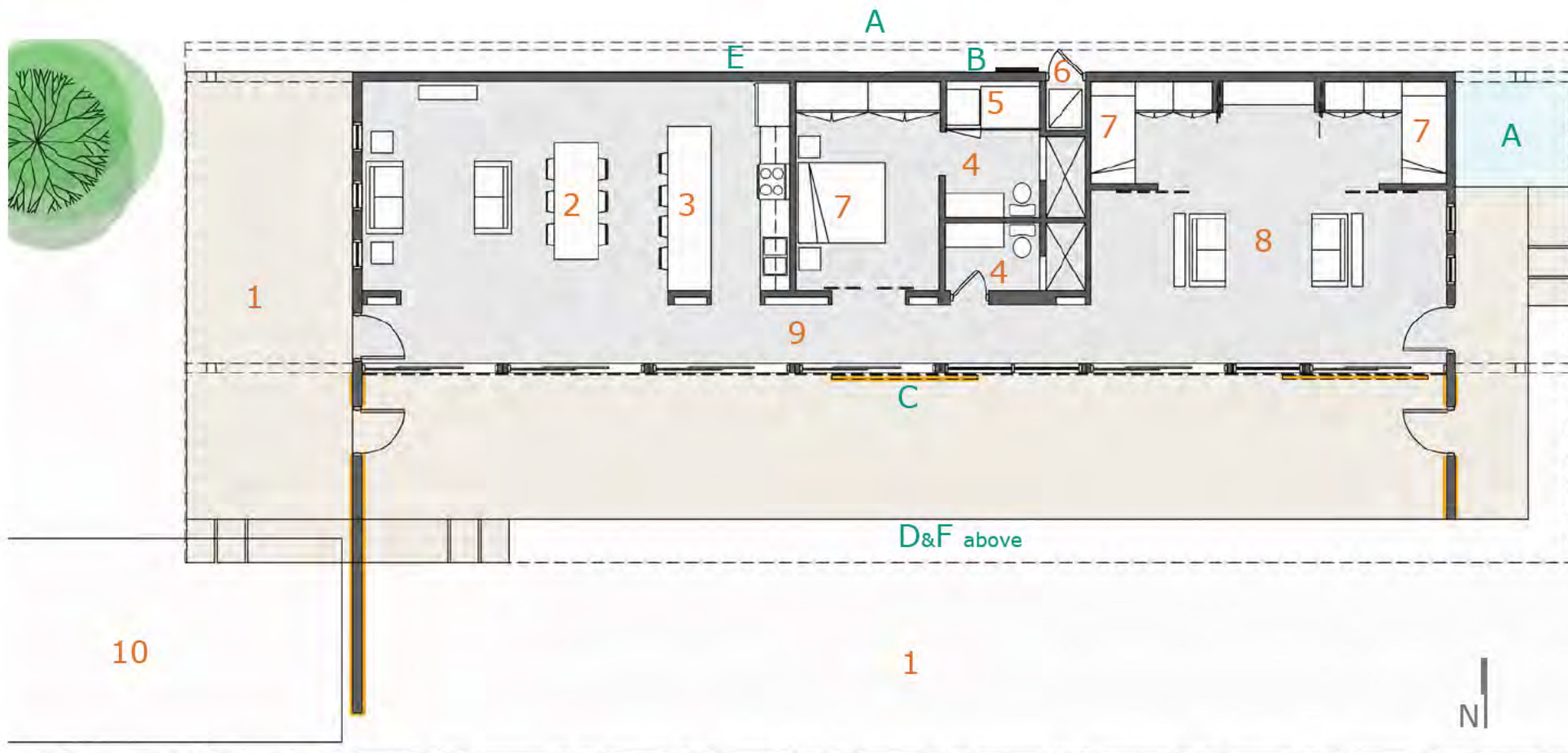


The **BAR**house is a modern interpretation of the shotgun house, typically found in the Gulf Coast Region. Conceived of as a 20' x 75' bar, the plan allows for a maximum amount of flexibility and simplicity in construction. The floor structure is raised off grade and spans the narrow home, bearing on 2 stem walls. This system cantilevers to create a long, covered side porch. Mechanical/electrical systems run below the floor slab for easy maintenance and installation. The sloping roof is clad in metal, creating large areas of exterior shade, acting as a water collection system, and allowing for a photo voltaic system to be added if site orientation is conducive to this system.

Circulation occurs along the glazed edge of the bar, with a mix of fixed panels and operable sliding glass doors. When coupled with opposing operable transoms, maximum cross ventilation is provided. Programmatic elements are modular, allowing for various configurations to suit different family needs. Public elements (kitchen, living and dining) all open directly onto the side porch. The service module includes 2 baths, laundry, mechanical closet, electrical panel, and tankless hot water heater - grouped together for efficiency. The bedrooms are designed to be highly flexible with one larger private bedroom and 2 bunk rooms.







Legend: Spaces



- 1 Porch
- 2 Living / Dining
- 3 Kitchen
- 4 Bath
- 5 Laundry
- 6 Mechanical
- 7 Bed / Bunk
- 8 Flex / Study
- 9 Gallery
- 10 Parking

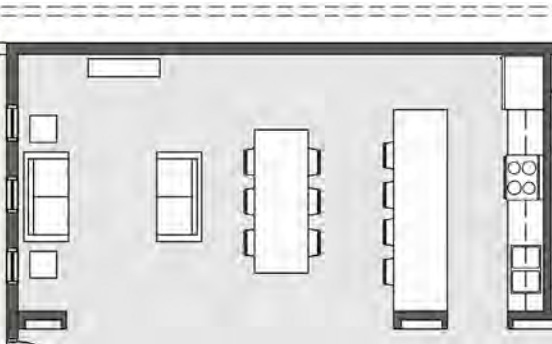
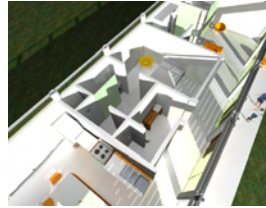


Legend: Features

- A Water collection tied to gutter system
- B Tankless water heater
- C Operable sun shades / hurricane shutters
- D Roof above shading west and south exposures
- E Clerestory above (length of wall): cross ventilation
- F Photovoltaics (alternate orientations)

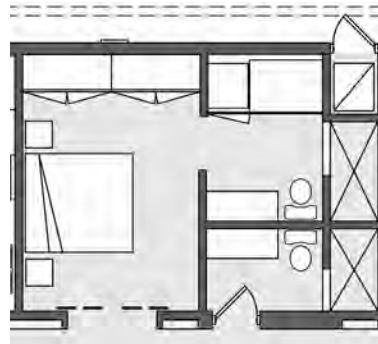
The Modules: Flexibility of Layouts

The program for the **BAR**house lends itself to be split into 3 distinct modules, allowing for a range of layouts to meet the needs of different family units.



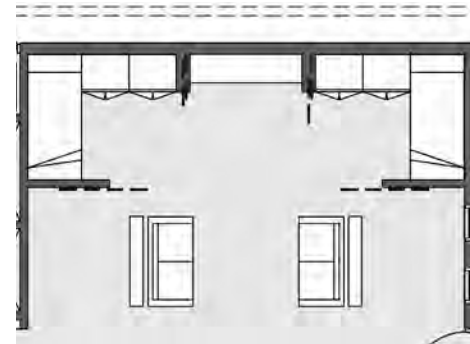
Public

Living
Dining
Kitchen



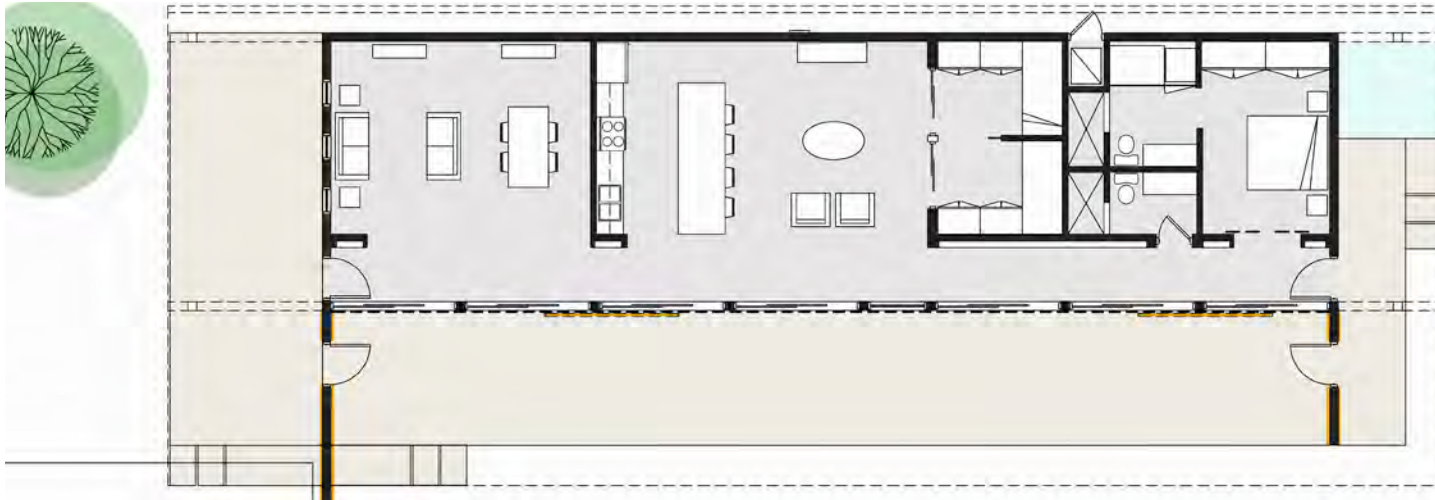
Bed / Service

Bed
Bath (2)
Laundry
Mechanical
Electrical



Bed / Flex

Bed / Bunk (2)
Flex Space:
study, office, den,
mud room, etc.

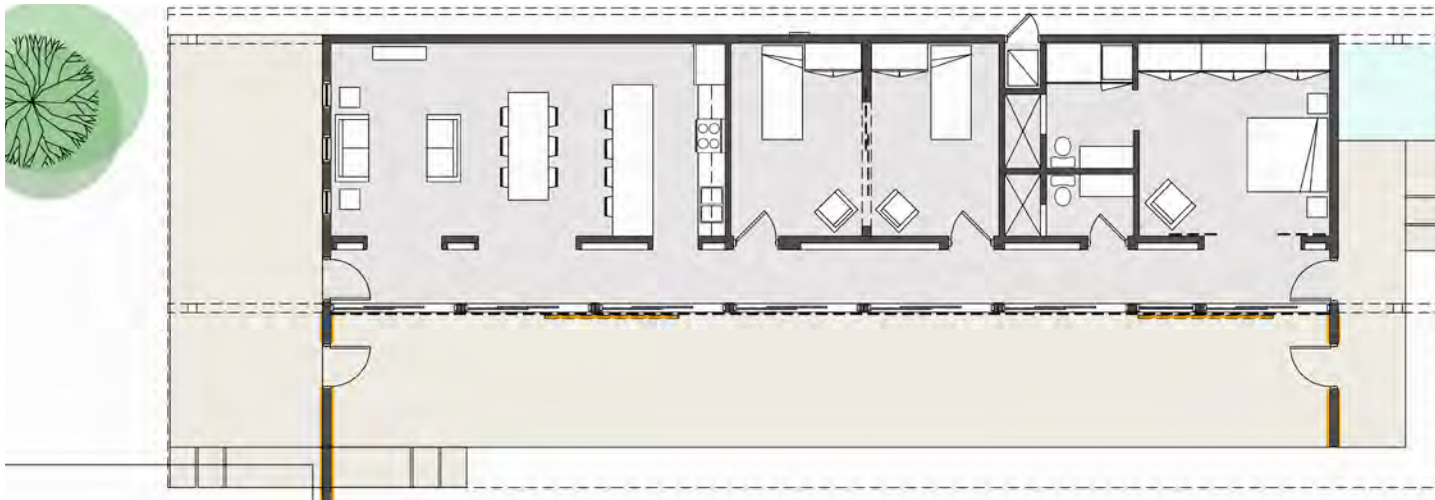


Alternate Layout 1

Bed / Service Component at east end of house

Bed / Flex Component functions as office / guest quarters

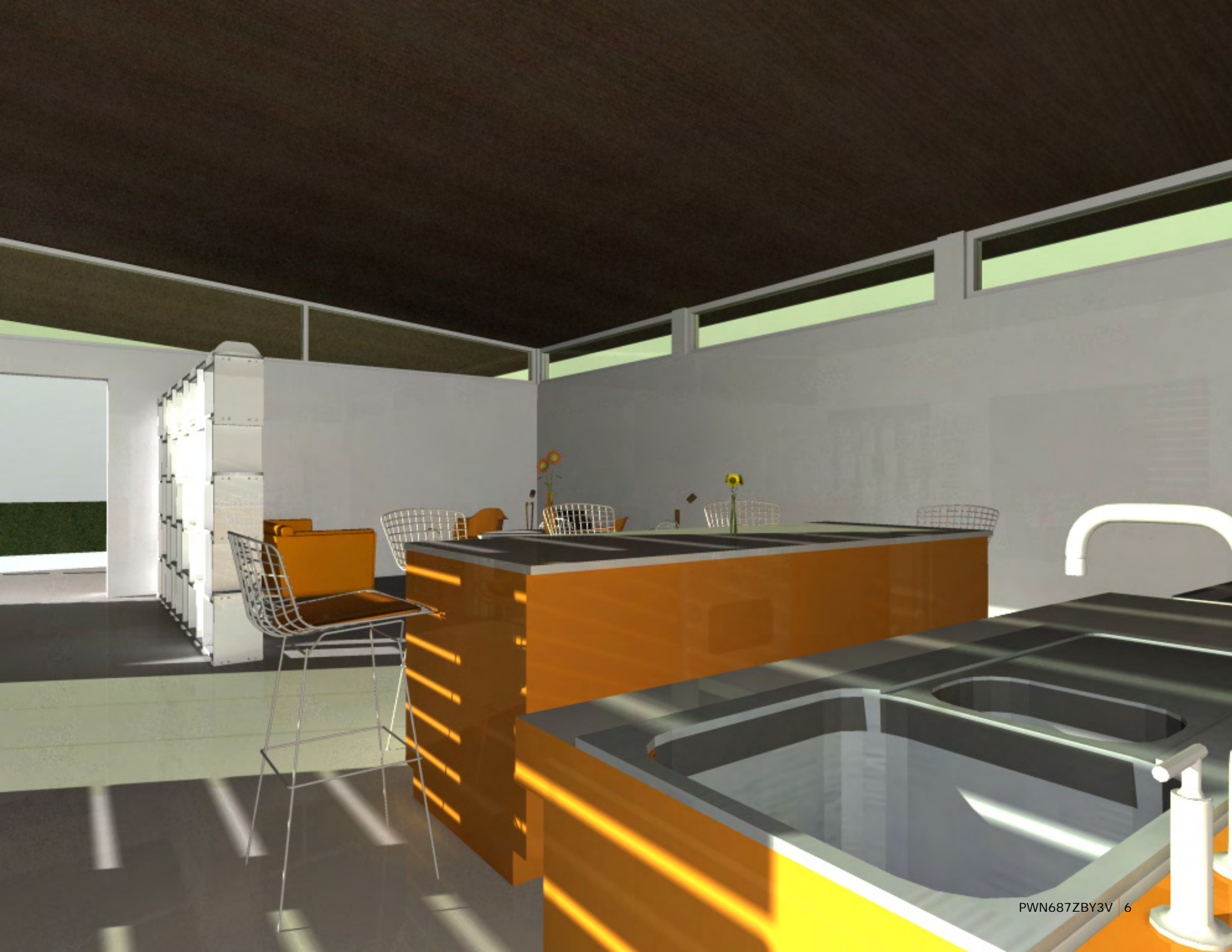
Public component visually separates the kitchen



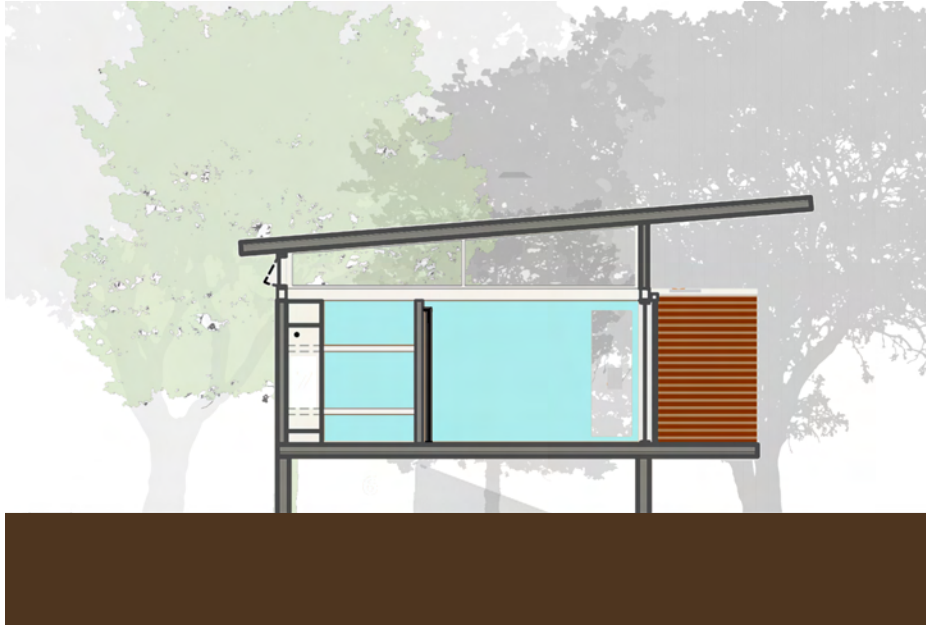
Alternate Layout 2

Bed / Service Component at East end of house and is enlarged

Bed / Flex Space functions as larger, traditional bedrooms







Structural Options:

The simple bar plan allows various structural configurations depending on location, cost effective material selections, and availability of local materials.

- 1: Stem wall, hollow-core floor and roof systems, masonry walls / columns and tie beams
- 2: Stem wall, wood floor joist and roof systems, pre-manufactured infill wall panels, columns
- 3: Stem wall, metal floor and roof systems, pre-manufactured infill metal wall panels, columns





