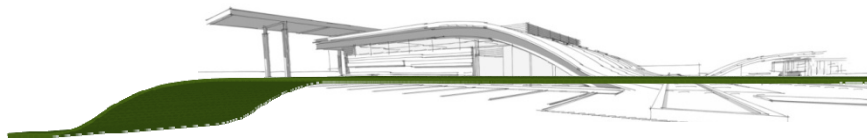


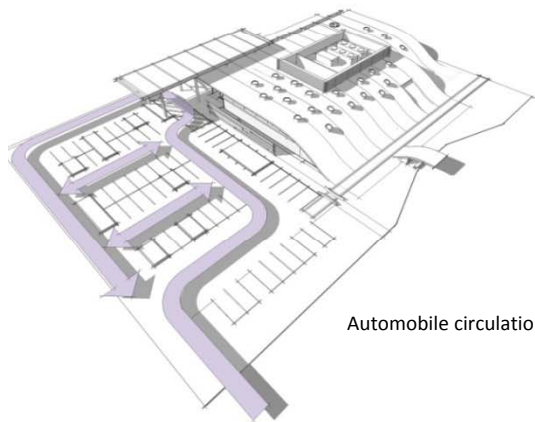
### THE GRASS BLANKET

For many of those who will hypothetically visit this place the landscape can often be cruel and unforgiving. Landscape and shelter are contradicting conditions.

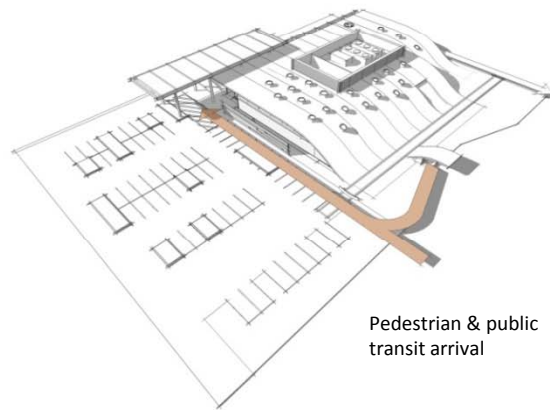
The generator for this project was the desire to articulate the medicinal aspect of nature both in a technical and sculptural way so that it becomes a catalyst for rejuvenation not just to the individual but for a community - in this case expressed by the ground plane gently lifting up and over, blanketing a space within the site. Not only does it create a place one can seek safety, comfort and care but just as importantly a place where one can find inspiration. By capturing views, colors, textures and smells, the architecture represents both the spiritual and medicinal healing one can find within this proposed landscape.



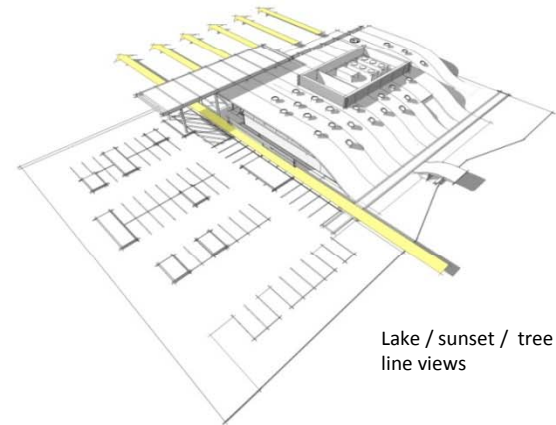
**SITE** – the entry into the site is created by extending Robinson Street across Orange Blossom Trail. By locating the entry in this way the existing traffic light is used to regulate traffic into and from the clinic thus providing safe and convenient access from all approaching directions. The 23,000 sf, one-story building covers about two-thirds of the site and sits at the northern end of the lot. The remaining portion to the south is parking. The parking surface is a light-colored, porous paving system with intermittent swaths of green grass. Future expansion is incorporated into the plan by allowing for growth to occur to the south.



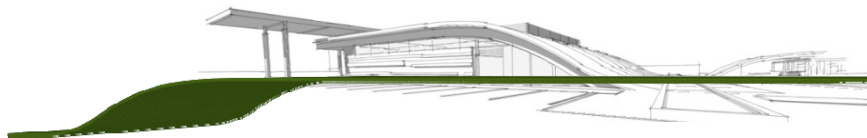
Automobile circulation



Pedestrian & public transit arrival

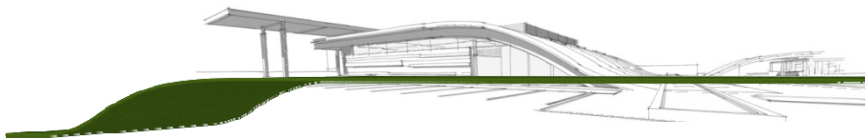


Lake / sunset / tree line views





**STREET PRESENCE** – Rather than introducing another architectural façade to what is already a paved industrial streetscape almost devoid of the presence of nature, this intervention revives a swatch of the natural Florida landscape. A gently sloping grassy hillside abundant with indigenous drought-resistant wild flowers provides a point of visual relief for the community while also purposely maintaining a sense of anonymity and restraint.



6VN4ZLQMHHU

HEALTHCARE CLINIC FOR HOMELESS 2010

**ON THE HORIZON** – In stark contrast to the down-played street side character, the backside of the building dramatically drops off in a plane of glass revealing the pristine views of the tree-lined horizon from across the lake. An oversized canopy creates a grand outdoor space for viewing the sunset.

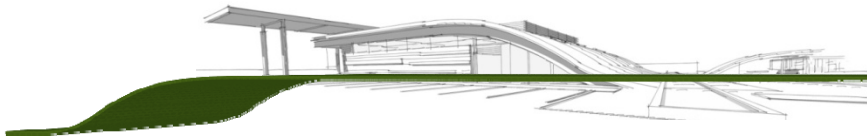


6VN4ZLQMHHU

HEALTHCARE CLINIC FOR HOMELESS 2010

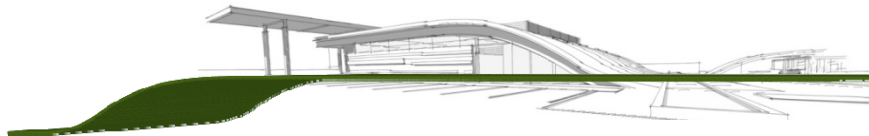


View of reception and main lobby



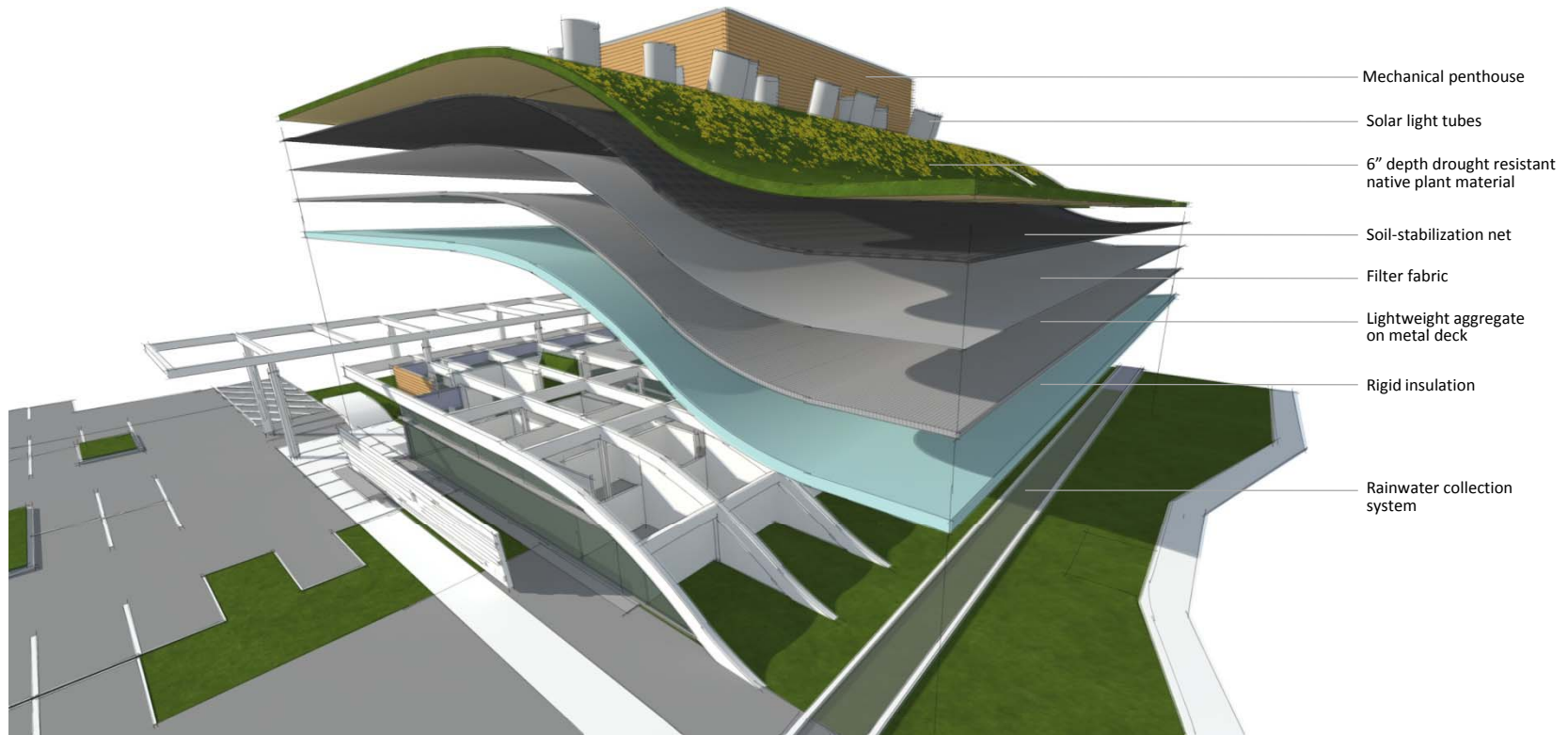


FLOOR PLAN

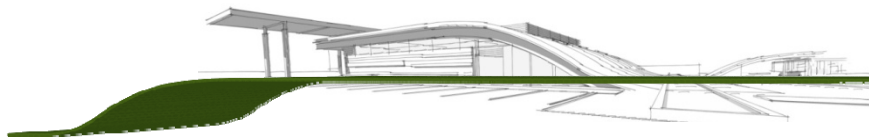


6VN4ZLQMHHU

HEALTHCARE CLINIC FOR HOMELESS 2010



Exploded view of green roof system





South elevation



Section at reception / courtyard



Section at exam rooms

