

ndhc

human dignity health clinic



HDHC HUMAN DIGNITY HEALTH CLINIC

OVERVIEW

OUR GOAL IN THIS PROJECT WAS TO DESIGN A MOBILE HEALTH CARE CENTER THAT WOULD ACT AS A HELPING HAND IN A COMMUNITY OF THE LESS FORTUNATE. WE WORKED TO DEVELOP A STRUCTURE THAT WOULD MOST EFFICIENTLY MEET THE NEEDS OF THE REQUIRED PROGRAM WHILE STILL BEING ABLE TO MAKE A POSITIVE IMPACT ON THE LIVES OF THOSE IN THE SURROUNDING COMMUNITY. WE BELIEVE THAT OUR PROPOSAL COULD BECOME AN AFFORDABLE SOLUTION TO THE HOMELESS PROBLEMS WE ARE FACING IN THIS DIFFICULT ECONOMIC TIMES BOTH STATE AND NATION WIDE. ALLOWING LABOR PROGRAMS AND SEMINARS TO BE OFFERED ONSITE SO THAT PATIENTS CAN UTILIZE THEIR TIME MORE EFFICIENTLY WHILE WAITING. OUR DESIGN IS SITE SPECIFIC TO THE PROGRAM GIVEN BUT WE HAVE CHOSEN TO DEVELOPE A DESIGN WHICH COULD BE ADAPTABLE TO OTHER LOCATIONS AS WELL. IN ORDER TO DEVELOPE A DESIGN IN WHICH COULD BE MOBILE AND AFFORDABLE WE HAVE DECIDED TO ADOPT A SHIPPING CONTAINER AS THE STANDARD MODULE FOR CONSTRUCTION. THIS ALLOWS US TO KEEP CONSTRUCTION COST TO A MINIMUM WHILE AT THE SAME TIME REDUCEING THE IMPACT TO THE SURROUNDING ENVIRONMENT.

WHY CONTAINERS ?

THE SHIPPING CONTAINERS ARE DESIGNED TO RESIST SEVERE WEATHER AND NATURAL CONDITIONS. WHICH MAKES IT ONE OF THE STRONGEST MOBILE OR STATIONARY UNITS OF CONSTRUCTION. THE CONTAINERS CAN HOLD UP TO FOURTY EIGHT THOUSAND POUNDS AND WITHSTAND WINDS EXCEEDING NINETY MILES AN HOUR. THEY CAN BE STACKED SEVEN CONTAINERS HIGH FULLY LOADED RELAYING ONLY ON THE TWIST LOCK MECHINISM THEY CAN BE CARRIED BY TRUCK, SHIP, PLANE, OR RAIL. THE COST IS DRASTICALLY LOWER THAN CONCRETE OR BLOCK CONSTRUCTION DO TO THE REDILY AVAILABLE QUANTITIY OF SHIPPING CONTAINERS NATIONWIDE. THE REUSE OF THE CONTAINERS PROMOTE THE CONTINUATION OF ENVIROMENTALLY CAUTIOUS PROJECTS. THE CONTAINERS ALLOW FOR A MORE EFFICIENT CONSTRUCTION TIMLINE, LESS TIME FROM START TO FINISH, LESSENS WEATHER DELAYS, AND LESS TIME TO BRIDGE IN TERMS OF FINANCING. THE DESIGN PROCESS BEHIND USING THE SHIPPING CONTAINERS HAS TO BE HIGHLY PLANNED BUT THE PRE-SET PROCESS OF A PREFAB PROJECT ALLOWS FOR MUCH GREATER TRANSPARENCY FOR ALL THE TRADES INVOLVED AS WELL AS THE CLIENT.

Seven out of 10 Americans are one paycheck away from being homeless

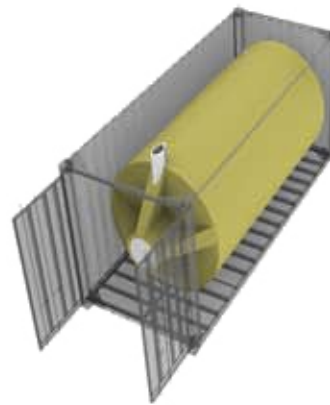


ONE OF OUR FIRST PROCESSES IN THE DESIGN STAGE WAS TO DEVELOP A HEIARCHIAL LIST OF THE PROGRAMS WHICH WHERE RE-QUIRED. IN DOING SO WE HAVE DECIDED TO ADOPT A OPEN CAMPUS DESIGN EACH INDIVIDUAL PROGRAM OCCUPIEING ITS OWN STAND ALONE SYSTEM. THIS ALLOWED THE STAND ALONES ROOM AND ABILITY TO EXPAND. WE HAVE PLACED ALL THE PROGRAMS USED BY THE COMMUNITY ON THE GROUND LEVEL, AND THE MORE PRIVATE OFFICES ON THE THIRD FLOOR. THE THIRD FLOOR COULD ALSO DOUBLE AS ROOMS IF THERE WAS AN INFLUX OF PATIENTS. THE SECOND FLOOR WILL BE PRIMARILY USED FOR CIRCULATION BETWEEN CERTAIN LEVELS, OFFERING BREAK AREAS BUT MOST IMPORTANTILY HOLD ALL THE MECHANICAL PODS WHICH WILL PROVID EXTRA ROOM FOR DUCT WORK, WIREING, PIPES, ETC. EACH PROGRAM HAS A LARGE ATRIUM OR COMMUNAL SPACE(medical pictured to the left) THIS GAVE A CHANGE TO PROVIDE AN AREA WHICH PROMOTED INTERACTION BETWEEN THE PATIENTS AND THE STAFF. IF THIS CLINIC IS TO HELP SERVE AS A SLOUTION WE CAN NOT JUST HAND THEM TOOTH PASTE AND EXPECT THIS IDEA TO WORK. WE HAVE COME DANGER-OUSLY CLOSE TO ACCEPTING THE HOMLESS SITUATION AS A PROBLEM THAT WE JUST CAN NOT SOLVE. WE CANNOT STOP EARTH-QUAKES, WE CANNOT PREVENT DROUGHTS, AND WE CANNOT PREVENT ALL CONFLICT, BUT WHEN WE KNOW WHERE THE HUNGRY, WHERE THE HOMLESS, AND WHERE THE MENTALY SICK EXIST, THEN WE CAN HELP.



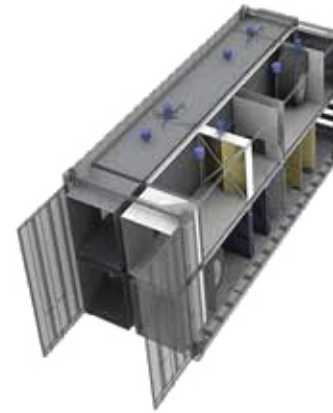
CONTAINER CONFIGURATIONS

WE HAVE DEVELOPED PRESET CONTAINER CONFIGURATIONS WHICH ALLOWS EACH CLINIC TO BE TAILORED FOR THE INDIVIDUAL NEEDS OF THAT COMMUNITY. IN THE FOLLOWING SLIDES YOU WILL SEE EACH OF THESE CONFIGURATIONS: CISTERN, AHU, COOLING TOWER/CHILLER, OPERATING ROOM, OFFICE, DENTAL, CATSCAN, EXAM, AND X-RAY PODS. EACH ARE RENDERED WITH THE ACTUAL NEEDED EQUIPMENT FOR THAT PARTICULAR CONFIGURATION AT ITS TRUE DEMINSIONS. ALL PRESET CONFIGURATIONS COMPLY TO THE FBC 2007 BUILDING CODE AS CLOSELY AS POSSIBLE.



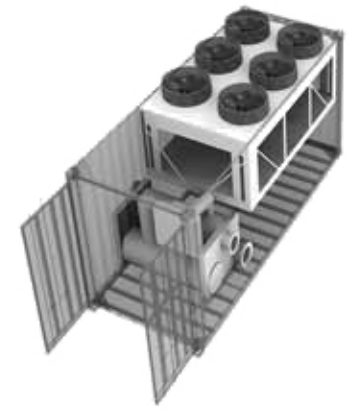
cistern

the cisterns will or can be place on the upper portions of the project to collect rain off a possible super structure or roofing system. a tank inside the container could hold around 3000 gallons of water.



a.h.u

this container shows the possible configuration of a AHU unit. this unit would have to be custom built for this size container. there are other mobile units on the market which are a little smaller than our need.

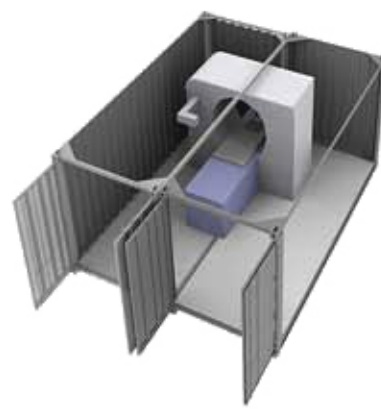


chiller

a configuration for the cooling plant is shown above. the cooling tower is positioned across the top of the container as the chiller uses the space left underneath.



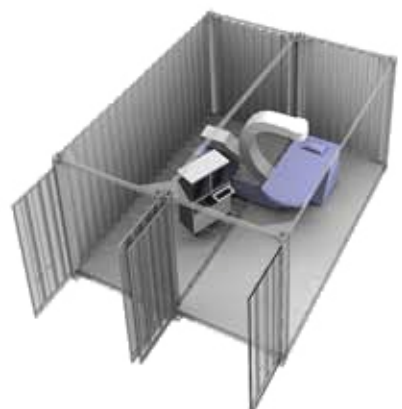
CONTAINER CONFIGURATIONS



catscan



exam



x-ray



operation room

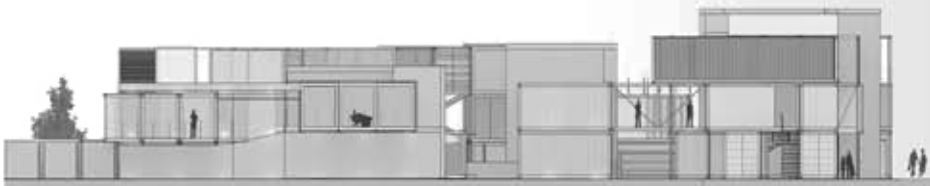


office



dental





SOUTH ELEVATION



EAST ELEVATION



NORTH ELEVATION



WEST ELEVATION



Level 1

MEDICAL CLINIC

- M1 WELL WAITING
- M2 SICK WAITING
- M3 CHILD WAITING
- M4 WEIGHTS AND MEASURES
- M5 EXAM ROOM
- M8 PROCEDURE ROOM
- M9 X-RAY
- M10 NURSE STATION
- M14 CLEAN ROOM
- M16 JANITOR

ADMINISTRATION

- A1 RECEPTION
- A2 CONSULTATION
- A3 BILL PAYMENT
- A4 ADMINISTRATIVE ASSISTANT
- A5 RECORDS
- A6 COPY
- A7 ADMINISTRATIVE OFFICE
- A8 EXECUTIVE ASSISTANT
- A9 EXECUTIVE DIRECTOR OFFICE

DENTAL CLINIC

- D1 WAITING
- D2 RECEPTIONIST
- D3 WEIGHTS AND MEASURES
- D4 HYGIENIST
- D5 DENTAL EXAM
- D7 LAB
- D14 JANITOR

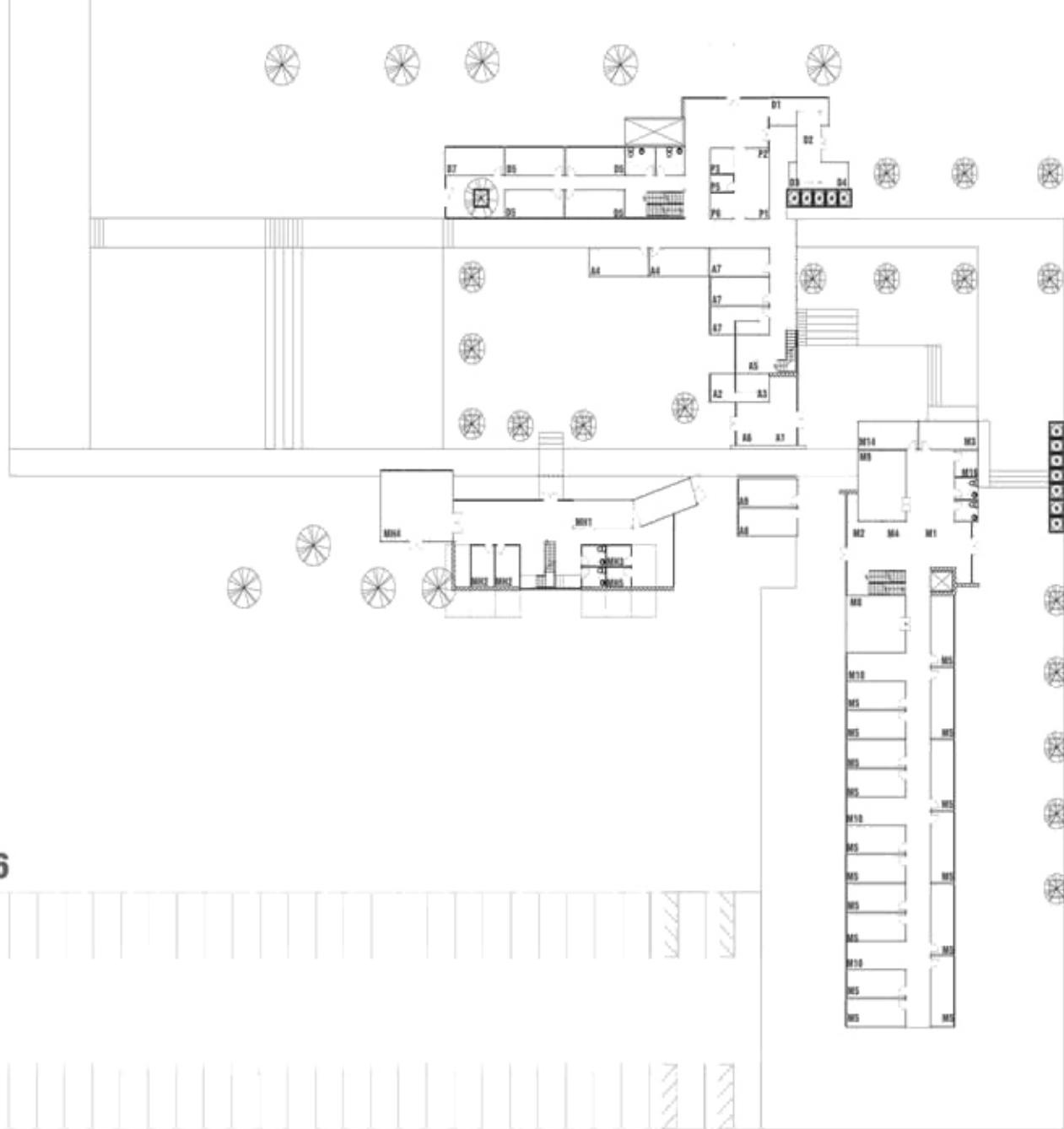
PHARMACY

- P1 WAITING
- P2 CONSULTATION
- P3 LAB
- P5 SECURED STORAGE
- P6 PICK UP/ DROP OFF

MENTAL HEALTH CLINIC

- MH1 WAITING
- MH2 CONSULTATION ROOM
- MH3 STORAGE
- MH4 GROUP CONSULTATION
- MH5 GROUP STORAGE

6HNS2GWJ9S6



SECTION

6HNS2GWJ9S6

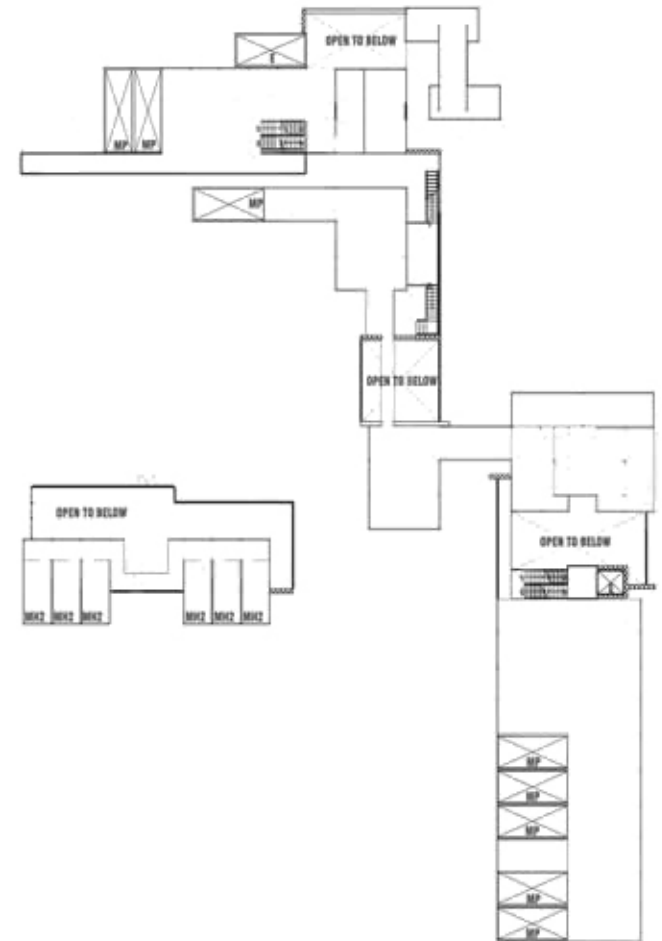
Level 2

MENTAL HEALTH CLINIC
MH2 CONSULTATION ROOM

PHARMACY
P4 PHARMASEUTICAL STORAGE

MP MECHANICAL POD
E ELAVATOR

SECOND LEVEL CIRCULATION



STREET VIEW

Level 3

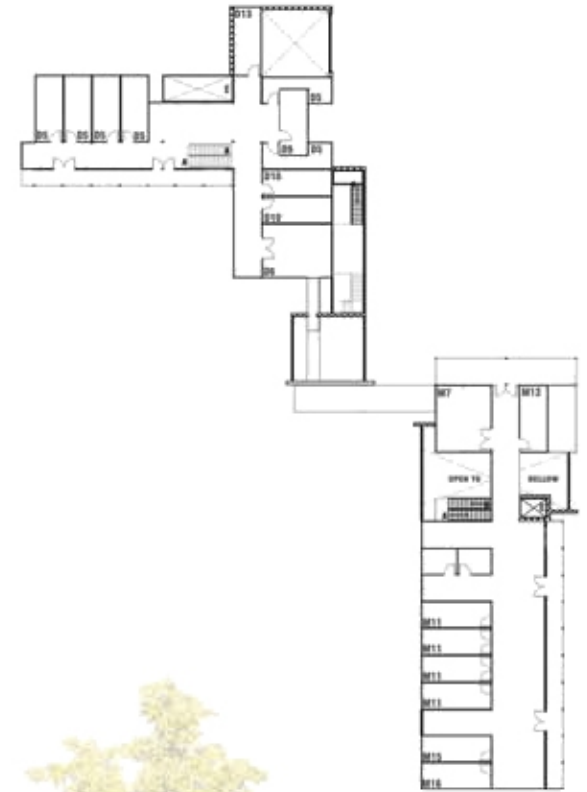
MEDICAL CLINIC

M7 MED ROOM
M11 DOCTOR OFFICE
M12 NURSE PRACTITIONER OFFICE
M415 EQUIPMENT ROOM
M5 EXAM ROOM
M6 EYE EXAM
M8 PROCEDURE ROOM
M16 JANITOR

DENTAL CLINIC

D5 DENTAL EXAM
D6 DENTAL SURGERY
D9 DENTURES LAB
D10 DENTIST OFFICE
D11 SOIL ROOM
D12 CLEAN ROOM
D13 EQUIPMENT ROOM
D14 JANITOR

E ELAVATOR



6HNS2GWJ9S6