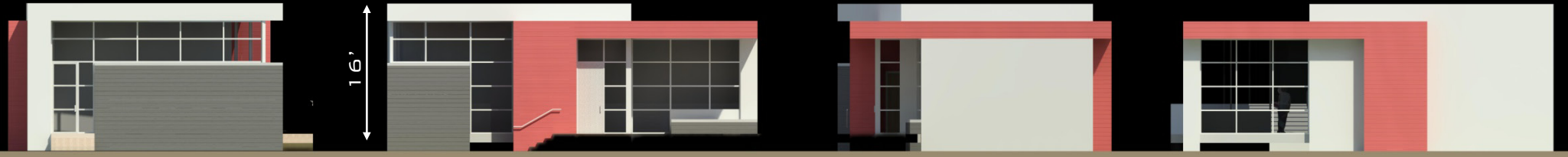




ENVIRONMENT BETWEEN CLASSROOMS ARE INTERACTIVE ZONES FOR INSTRUCTION OR LEISURE.

EACH CLASSROOM COMMUNITY IS GIVEN DISTINCT SIDING COLOR TO AID IN WAYFINDING.



CLASSROOM 3C

THE SUNSHINE STATE SUSTAINABLE CLASSROOM

EXTERIOR ENVIRONMENT - 6