

EN001.01

Project Total Square Footage:
46,000 SF

Cost per Square Foot:
\$326/SF

Construction Cost:
\$15,000,000

Date of Substantial Completion:
November 2017

Location of Project:
Pompano Beach, Florida

Program Summary:

The project consists of a 46,000 square foot Library, Cultural Center, and Master Plan for Civic Campus for a Municipality in Florida.

Culture House



Program Summary:

The Library/Cultural Center offers a unique opportunity to serve as a significant catalyst for the redevelopment of the new Civic Campus in the City. The goals set forth in the Conceptual Design - striving for true connectivity throughout the city - can be achieved by bringing together cultural, educational and community programs that are aligned in a singular and significant setting at the heart of the community.

Within communities across the United States, the contemporary library offers not only a place where printed material is available to the public, but also vibrant place of learning, sharing, producing and engaging in a wide range of activities and settings. The library is increasingly more often a space to gather, learn, and share, and a place where events occur, a magnet and center for community life. In addition to traditional physical media (books, newspapers, audio-visual material), with the evolvement of modern technology, today's libraries can offer increasingly versatile access to knowledge and information and a wider range of new experiences than ever before. Unifying this activity with the evening and daytime activities of the Cultural Center reinforce the Civic Campus as a vibrant, active place that will greatly benefit the City.

EN001.02

Constructing common ground

Pompano Beach is a divided city. Infrastructural elements reinforce a historic demographic rift in the city between the primarily Caucasian middle-class eastern half of the city and the lower-income African American and Hispanic neighborhoods to the west. The Library will be joined with a Digital Media Arts Center program and now be central to the life of all three neighborhoods.

Two Institutions

The new building contains two distinct institutions: The Broward County Pompano Beach Branch Library and the Pompano Beach Digital Media Arts Center. The institutions operate autonomously and require separate facilities. The City's project brief, nevertheless, called for stacked programs with a single entrance lobby along Atlantic Boulevard.

Single Building/Two Fronts

The Digital Media Arts Center requested the front entrance to face Atlantic Avenue and be visible from the bus stop; the library required the main entrance towards the south parking area. This was at odds with the City's original request of providing a single entry for the building and would mean that the library would turn its back to half its users.

Community Green Space:

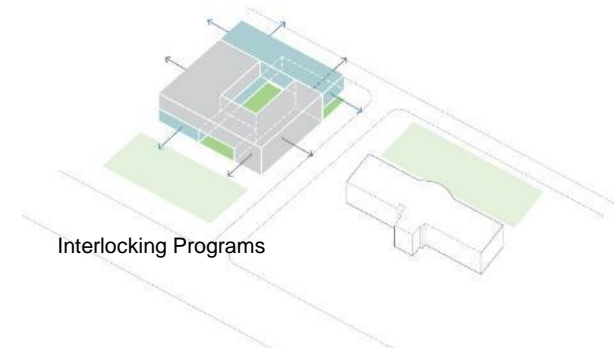
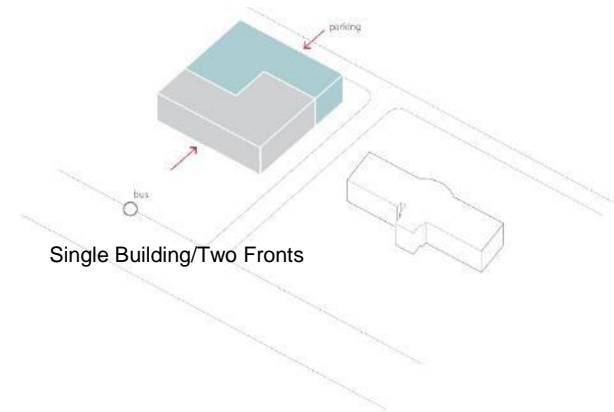
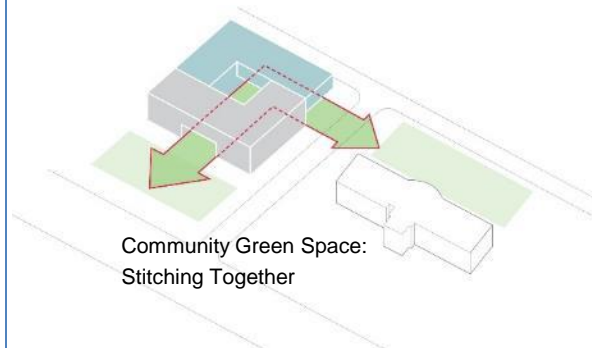
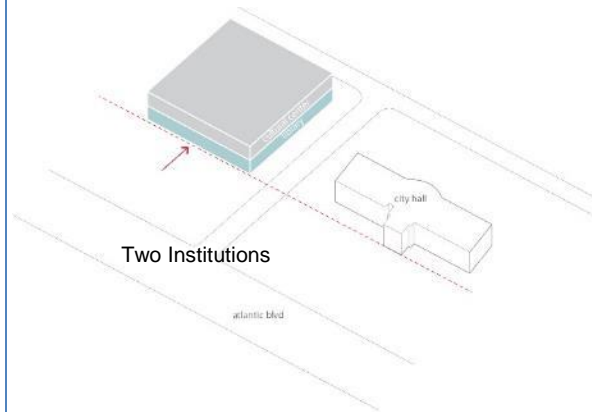
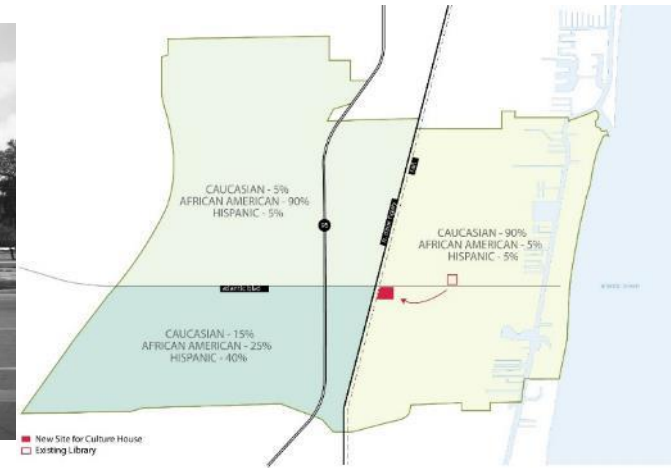
In order to solve the project's contradictions we created a unique urban space amongst the surrounding suburban parking lots through three interlinked new green spaces: a plaza to the north on Atlantic Boulevard, a palm garden to the west behind the courthouse and a collaborative courtyard. These community green spaces stitch together the two institutions and make the programs visible to the public.

Interlocking Programs

The new open spaces serve as catalyst for a new building type, which intertwines the functions of each organization while preserving their autonomy. This configuration allows each institution to be on both levels, have views out from all four sides of the building, and maintain distinct building entrances that are in view of each other.



Project Site Looking East



EN001.03

Dual Entries

The project brings together two distinct facilities: a Cultural Arts and Media Center and a Branch Library. As such, the project was guided by two distinct clients, the City and the County Library system, with different aspirations and conceptions of public life. For the City, the building's relationship to public transit on Atlantic Boulevard was paramount. For the County Library system, locating the entry in direct relationship to parking was essential. Thus, while the original intent was to have a single lobby as point of access to both programs, our design solution provides two points of entry and connects them by creating a breezeway and courtyard off the main plaza. This extension of the civic space allows the two separate programs to further support one another, and connect the project as a whole.

Phase 1

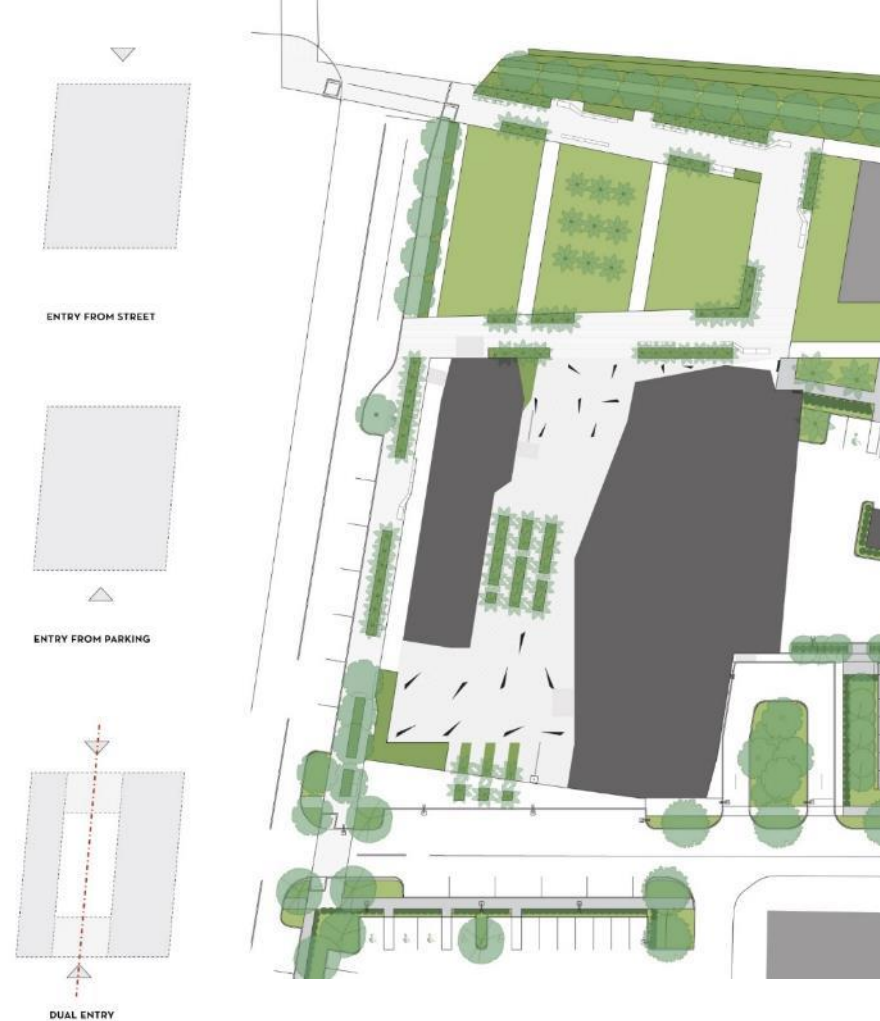
The first phase of the master plan constructs the new Culture House and landscaping for the northeast side of the campus. The North Plaza along Atlantic Boulevard creates a new connection to the local bus stop. The two-sided orientation of the building allows patrons to enter the courtyard from both the city bus and surface parking to the south.

Phase 2

The second phase of the master plan includes a new multistory parking garage wrapped by commercial programs in the southeast quadrant of the campus. The new garage allows for a reduction in overall surface parking to implement additional plazas and green spaces in Phase 3.

Phase 3

The third phase of the master plan builds out the entire western half of the campus. This includes new commercial and city buildings, new landscaping along Atlantic Boulevard and the new Palm Tree Plaza south the existing City Hall.



Phase 1



Phase 2



Phase 3

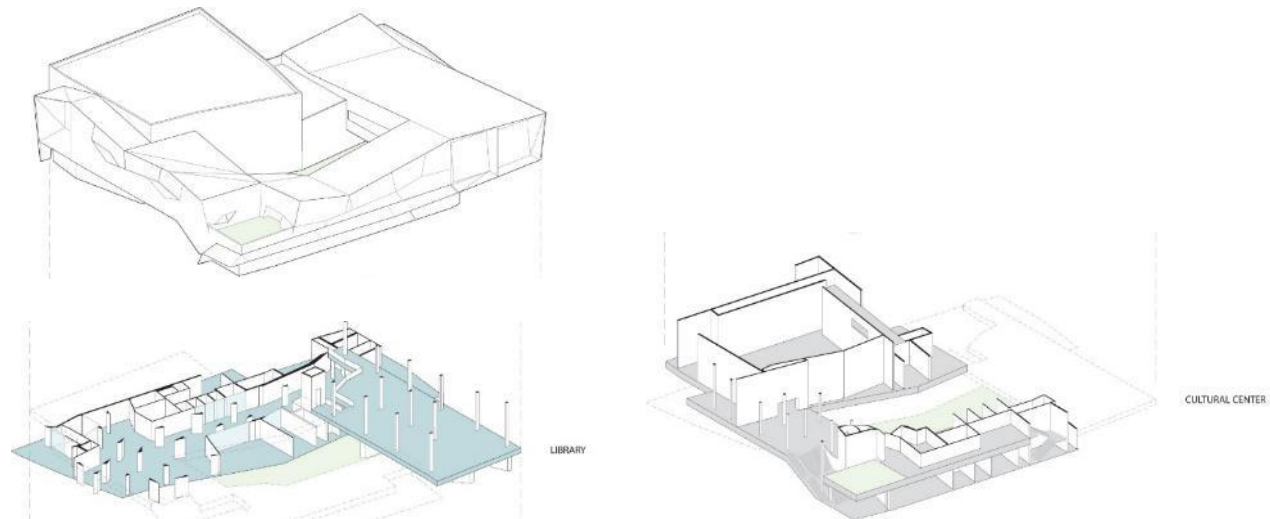
EN001.04

Public Image

The project relies on forms of construction conventional to public buildings in Florida. At the same time, the form of the building and the juxtapositions of different materials in the same color (white glass and white stucco) resist their historical association with either the International or Mediterranean styles, pointing towards a new image for the public.



View of Library Entrance



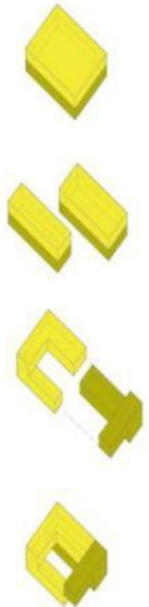
Exploded Axonometric Diagram

EN001.05

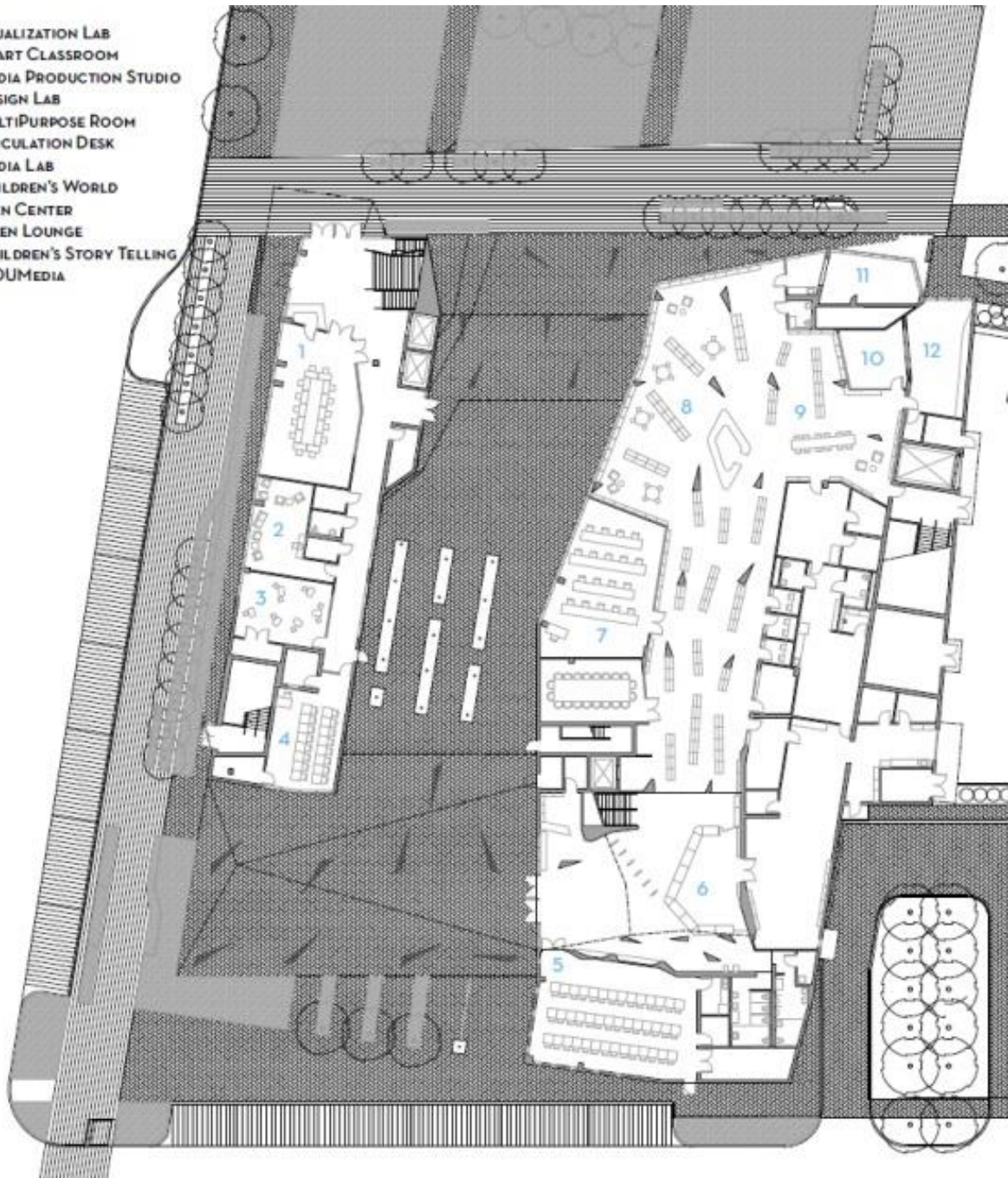
Interlocking Volumes/Program Organization

We located in the lower level those aspects (Digital Media Arts Center and the Branch Library) that are most active during the daytime as a means of activating the public ground. In the upper level, we located the Reading Room for the Library, which benefits from quietness, as well as the Black Box Theater, which is most active after hours and on the weekends.

cultural center volume /
library volume



- 1 - VISUALIZATION LAB
- 2 - SMART CLASSROOM
- 3 - MEDIA PRODUCTION STUDIO
- 4 - DESIGN LAB
- 5 - MULTIPURPOSE ROOM
- 6 - CIRCULATION DESK
- 7 - MEDIA LAB
- 8 - CHILDREN'S WORLD
- 9 - TEEN CENTER
- 10 - TEEN LOUNGE
- 11 - CHILDREN'S STORY TELLING
- 12 - YOU MEDIA



Ground Floor Plan

EN001.06

View of Library Reception



EN001.07

Interlocking Volumes/Program Organization

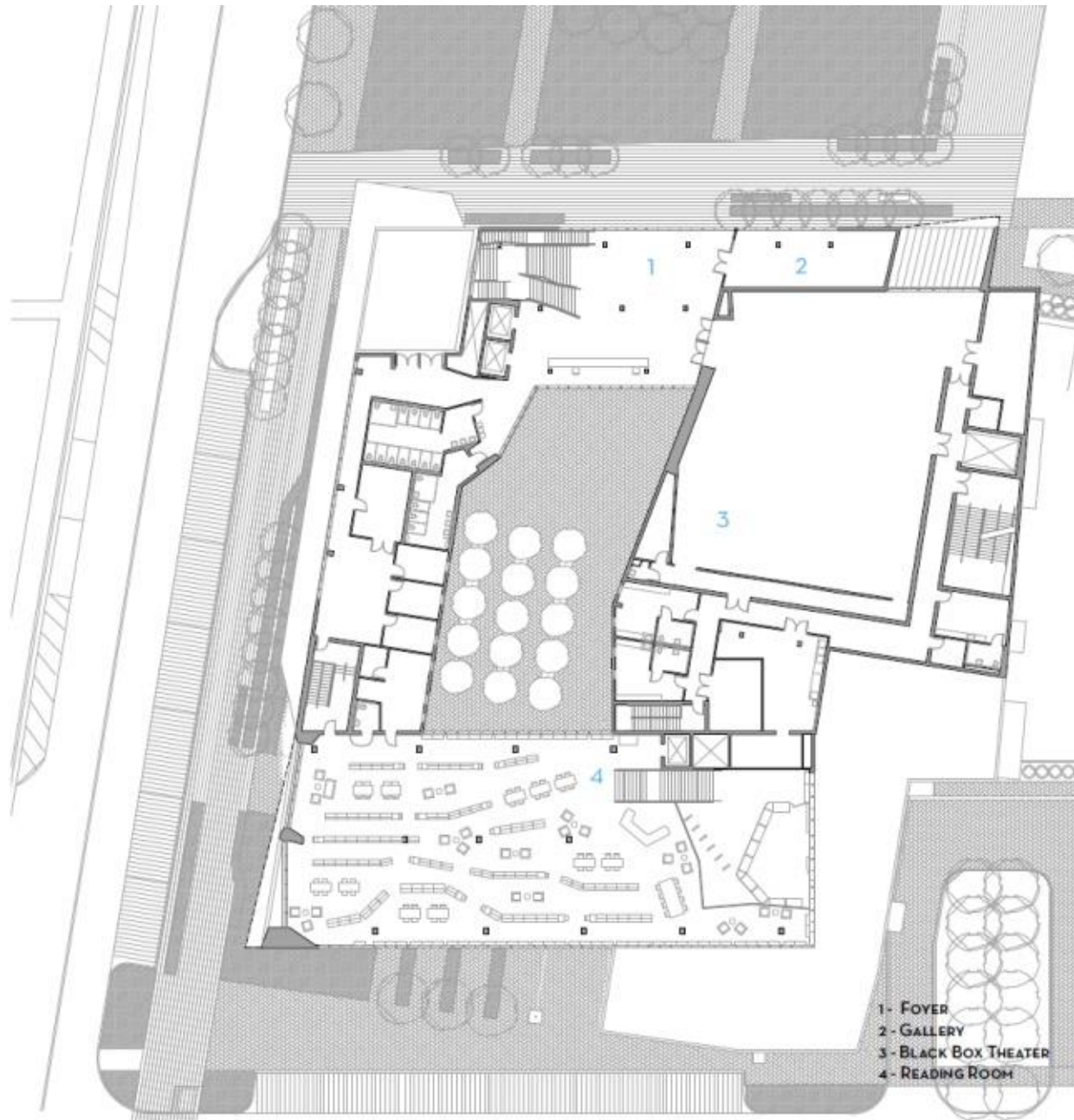
The Reading Room of the Library takes advantage of the second level, providing for much desired quiet away from the children and youth sections located on the ground level. The conventional division between Stack and Reading Room is eroded so that the stacks help create smaller areas of study and collaborative work.



TRADITIONAL LIBRARY



BREAKING THE LINE



- 1- FOYER
- 2- GALLERY
- 3- BLACK BOX THEATER
- 4- READING ROOM

Second Floor Plan

EN001.08

View of Library Reading Room
(top right)

View of Children's Area
(bottom right)



EN001.09

While the original project brief called for a single lobby as point of access to both programs, our design solution provides two points of entry and connects them by creating a breezeway and courtyard off the main plaza.

Framed Views

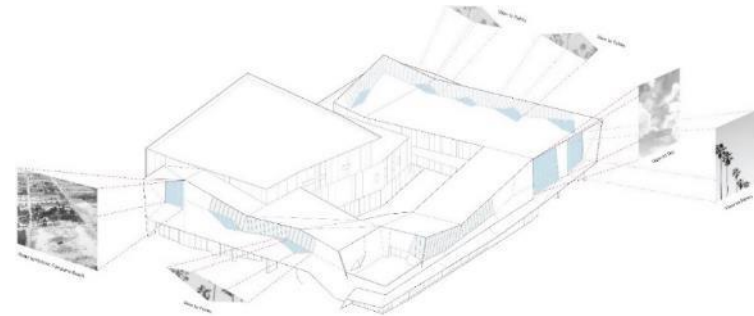
The building is designed to let in abundant day-light and frame views to the surrounding context. The Cultural Center Black Box Theater features a large picture window that frames a view of historic downtown Pompano Beach. The Library has two large windows on the east elevation, one oriented up to frame the sky and the other oriented to frame the palm tree tops to the western plaza. Eyelid windows on the south and north sides of the building frame views of palm trees, while large translucent glass panes bring in diffused daylight to the reading room.



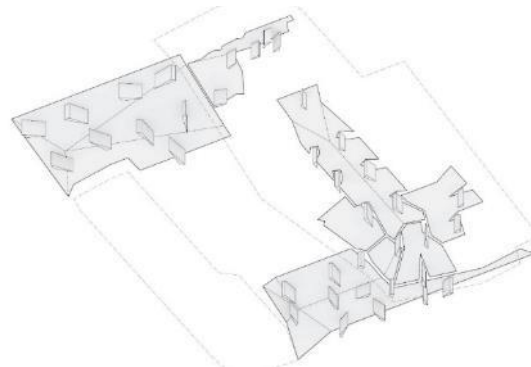
North-South Building Section

Shifting Orientations

The outdoor plaza and Library are linked through the continuation of a faceted ceiling plane. A field of wedge-shaped columns orients users through the space and creates a variety of views and experiences.



Framed View Diagram



Worm's-eye view of Ground Floor Columns & Ceilings

EN001.10

View of Library Entrance
(top right)

View of Library Entrance
(bottom right)



EN001.11

View of Courtyard from South
(top right)

View of Courtyard from North
(bottom right)



EN001.12

View of Library Reading Room



EN001.13

View of Library Reading Room
(top right)

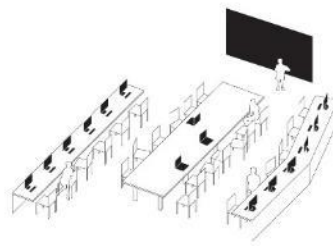
View of Children's Area
(bottom right)



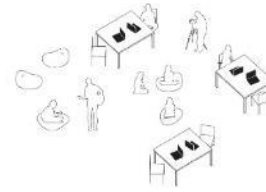
EN001.14

Collaborative Workspace for Digital Media and Art Production

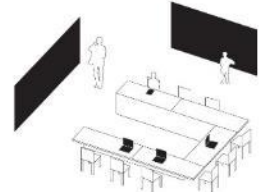
At Culture House, digital media is understood, not only as a means of disseminating, but also producing knowledge. Both, the Library and the Digital Arts and Media Center have received grants to become pilot programs in providing public access to advanced digital technology, allowing the public use technology for making and learning. The program incorporates digital technology classrooms and maker spaces, and technology is widely distributed throughout the project.



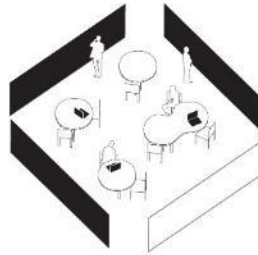
Media Production



YOUmedia

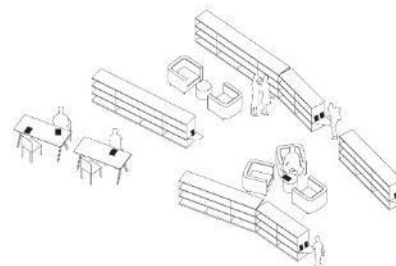


Multi-purpose

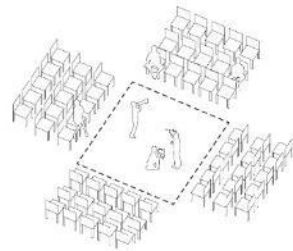


Design Lab

Electronic Media Lab



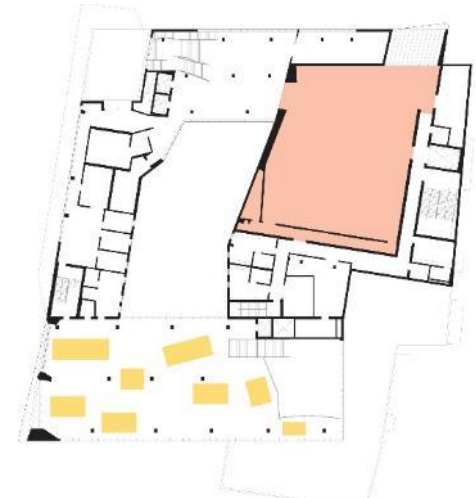
Ipad Stations



Blackbox Theater



Ground Floor Plan



Second Floor Plan

EN001.15

View of Cultural Center Upper Lobby



EN001.16

Constructing Culture

The entry to the Cultural Arts and Media Center is at the nexus between classrooms, making spaces, and a Black Box Theater. The staircase climbs above the breezeway while a large window in the black box offers the opportunity to look back at the city's new plaza, giving the building its iconic figure.



Section Through Cultural Center Lobby and Black Box Theater

Capitalizing on the Florida weather, the Branch Library's adult reading room is elevated to create a public porch at the ground level as a forecourt to the library. Thus perched, the reading room will overlook the new City Hall Gardens while other windows will frame views of the sky and a filtered curtain wall will enhance natural light.



Section Through Reading Room

EN001.17

View of Library Lobby
(top right)

View of Breezeway
(bottom right)



EN001.18

View of Cultural Center Entrance Stair



EN001.19

View of Black Box Theater

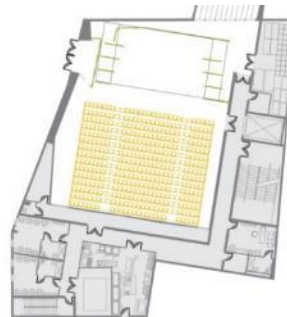
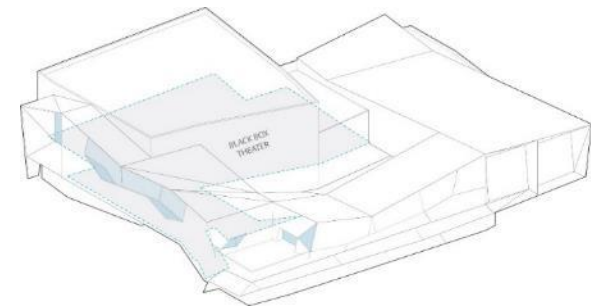
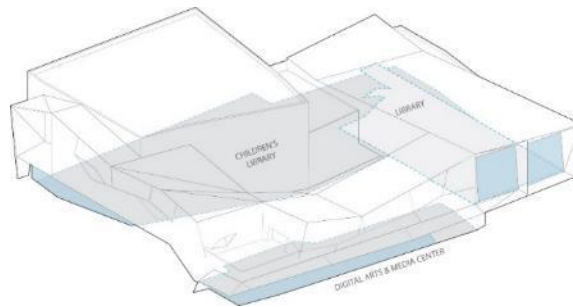


EN001.20

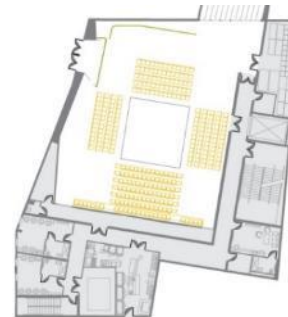
Night View from Atlantic Boulevard

Day to Night

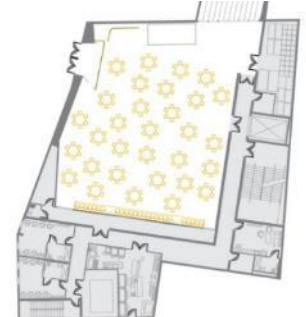
Activity and lighting transforms the building from day to night. Day use programs, including the Library and Media Studios, create an active ground plane throughout the day. At night the Theater and north end of the building light up to create a beacon towards Historic Pompano and Atlantic Boulevard.



PROSCENIUM
ARRANGEMENT



CENTER
STAGE



BANQUET